

Service Manual

ORDER NO.
CRT3909

AV RECEIVER/DVD PLAYER 6.5 INCH WIDE DISPLAY

AVH-P4900DVD/UC



is a trademark of DVD Format/Logo Licensing Corporation.

This service manual should be used together with the following manual(s) listed below. For the parts numbers, adjustments, etc. which are not shown in this manual, refer to the following manual(s).

Model No.	Order No.	Mech.Module	Remarks
AVH-P5700DVD/EW	CRT3425		
CX-3078	CRT3257	MS-3V1	DVD Mech. Module:Circuit Description, Mech. Description, Disassembly

SAFETY INFORMATION

CAUTION

This service manual is intended for qualified service technicians; it is not meant for the casual do-it-yourselfer. Qualified technicians have the necessary test equipment and tools, and have been trained to properly and safely repair complex products such as those covered by this manual. Improperly performed repairs can adversely affect the safety and reliability of the product and may void the warranty. If you are not qualified to perform the repair of this product properly and safely, you should not risk trying to do so and refer the repair to a qualified service technician.

WARNING

This product contains lead in solder and certain electrical parts contain chemicals which are known to the state of California to cause cancer, birth defects or other reproductive harm.
Health & Safety Code Section 25249.6 - Proposition 65

This product contains mercury. Disposal of this material may be regulated due to environmental considerations. For disposal or recycling information, please contact your local authorities or the Electronics Industries Alliance: www.eiae.org.

● Service Precautions

1. Note becoming the high temperature while the main body is operating.
2. Peel off the name label carefully when you confirm the voltage of the fan motor.
The purpose of the reason is to try to paste the same thing again.

EXPLODED VIEWS AND PARTS LIST

PACKING(Page 14)

PACKING SECTION PARTS LIST

*:Non spare part

Mark	No.	Description	AVH-P5700DVD/UC	AVH-P4900DVD/UC
	1	Carton	CHG5494	CHG6096
	3	Contain Box	CHL5494	CHL6096
	21	Accessory Assy	CEA4771	CEA7517
	24	Bush	CNV1917	CNV3930
	27-2	Owner's Manual	CRB2053	CRB2343
	27-3	Owner's Manual	CRB2054	CRB2344
	27-4	Installation Manual	CRD3966	CRD4195
*	27-7	Card	ARY1048	Not used
*	27-8	Warranty Card	Not used	CRY1246

EXTERIOR(1)(Page 18)**EXTERIOR(1) SECTION PARTS LIST**

Mark	No.	Description	AVH-P5700DVD/UC	AVH-P4900DVD/UC
	7	Button(EJECT)	CAC9051	CAI1299
	8	Button(A-BM)	CAC9052	CAI1300
	15	Panel	CNB3102	CNB3423
	23	Lever Unit	CXC4211	CXC7973
	29	Flexible PCB	CNP8806	CNP9694
	33	Mother Unit	CWM9809	CWN2610
	48	Connector(CN171)	CKS3751	CKS5627
	52	Connector(CN175)	CKS4068	CKS5572
	70	RGB Unit	CWM9816	CWN2614
	71	Connector(CN951)	CKS4497	Not used
	75	Detach Grille Assy	CXC4193	CXC7949
	80	DVD Mechanism Module(MS-3V1)	CXK6418	CXK6421
	85	Grille	CNS8174	CNS9048
	87	Grille Unit	CXC4206	CXC7971
	95	Panel	CNS7797	CNS9047
	97	Grille Assy	CXC4188	CXC7947

EXTERIOR(2)(Page 20)**EXTERIOR(2) SECTION PARTS LIST**

Mark	No.	Description	AVH-P5700DVD/UC	AVH-P4900DVD/UC
	180	Cover Unit	CXC5118	CXC7975

EXTERIOR(3)(Page 24)**EXTERIOR(3) SECTION PARTS LIST**

Mark	No.	Description	AVH-P5700DVD/UC	AVH-P4900DVD/UC
	12	Monitor Unit	CWM9821	CWN2616
	13	Connector(CN4541)	CKS3968	CKS5637
	23	LCD Module	CWX3151	CWX3519
	24	Grille Unit	CXC4201	CXC7969

DVD MECHANISM MODULE(MS-3V1)(Page 26)**DVD MECHANISM MODULE(MS-3V1) SECTION PARTS LIST**

Mark	No.	Description	AVH-P5700DVD/UC	AVH-P4900DVD/UC
	1	DVD Core Unit	CWX3170	CWX3372
	3	Connector(CN1201)	CKS4067	CKS5043
	5	Connector(CN1231)	CKS4624	CKS5017
	7	Connector(CN1101)	CKS4625	CKS4842
	8	Connector(CN1901)	CKS3971	CKS5054
	36	Pickup Unit(Service)	CXX1770	CXX1945

ELECTRICAL PARTS LIST(Page 96)

MOTHER UNIT

Circuit Symbol and No.	Part Name	AVH-P5700DVD/UC	AVH-P4900DVD/UC
IC151	IC	TC4S81F	Not used
IC241	IC	PAL007B	PAL007C
IC441	IC	TA2050FS1	Not used
IC461	IC	NJM2138V	Not used
IC571	IC	NJM2136V	Not used
IC601	IC	PE5485A	PE5621A
Q151	Transistor	2SC4081	Not used
Q241	Transistor	DTC124EU	DTC124EUA
Q242	Transistor	DTC144EU	DTC144EUA
Q301	Transistor	IMD2A	Not used
Q302	Transistor	DTC323TU	Not used
Q303	Transistor	DTC124EU	Not used
Q461	Transistor	2SC4081	Not used
Q571	Transistor	2SC4081	Not used
Q601	Transistor	DTC124EU	DTC124EUA
Q691	Transistor	DTA114EU	DTA114EUA
Q692	Transistor	DTC144EU	DTC144EUA
Q693	Transistor	DTC114EU	Not used
Q694	Transistor	2SC4081	Not used
Q696	Transistor	2SC4081	Not used
Q702	Transistor	DTC114EU	DTC114EUA
Q703	Transistor	2SA1576	2SA1576A
Q706	Transistor	2SA1576	2SA1576A
Q752	Transistor	DTC144EU	DTC144EUA
Q755	Transistor	2SA1577	Not used
Q756	Transistor	DTC144EU	Not used
Q772	Transistor	DTC144EU	DTC144EUA
Q774	Transistor	DTC144EU	DTC144EUA
Q783	Transistor	DTC114EU	DTC114EUA
Q805	Transistor	DTC124EU	DTC124EUA
Q806	Transistor	DTC114EU	DTC114EUA
D151	Diode Network	DA204U	Not used
D152	Diode Network	DA204U	Not used
D691	Diode	1SS355	Not used
L441	Chip Ferrite Bead	CTF1399	Not used
L461	Chip Ferrite Bead	CTF1399	Not used
L571	Chip Ferrite Bead	CTF1399	Not used
△FU151	Fuse 3 A	CEK1286	RS1/16S0R0J
△FU152	Fuse 3 A	CEK1286	RS1/16S0R0J
R151		RS1/16S750J	Not used
R152		RS1/16S750J	Not used

Circuit Symbol and No.	Part Name	AVH-P5700DVD/UC	AVH-P4900DVD/UC
R153		RS1/16S750J	Not used
R154		RS1/16S750J	Not used
R155		RS1/16S681J	Not used
R156		RS1/16S473J	Not used
R157		RS1/16S473J	Not used
R158		RS1/16S681J	Not used
R301		RS1/16S101J	Not used
R302		RS1/16S473J	Not used
R303		RS1/16S473J	Not used
R304		RS1/16S472J	RS1/16S0R0J
R305		RS1/16S472J	RS1/16S0R0J
R306		RS1/16S473J	Not used
R307		RS1/16S103J	RS1/16S0R0J
R308		RS1/16S103J	RS1/16S0R0J
R309		RS1/16S821J	Not used
R310		RS1/16S473J	Not used
R321		RS1/16S104J	RS1/16S0R0J
R324		RS1/16S473J	Not used
R325		RS1/16S102J	Not used
R441		RS1/16S102J	Not used
R442		RS1/16S102J	Not used
R443		RS1/16S181J	Not used
R444		RS1/16S181J	Not used
R445		RS1/16S223J	Not used
R446		RS1/16S223J	Not used
R447		RS1/16S562J	Not used
R448		RS1/16S562J	Not used
R461		RS1/16S472J	RS1/16S0R0J
R462		RS1/16S472J	RS1/16S0R0J
R463		RS1/16S472J	Not used
R464		RS1/16S472J	Not used
R465		RS1/16S472J	RS1/16S0R0J
R466		RS1/16S472J	RS1/16S0R0J
R467		RS1/16S472J	Not used
R468		RS1/16S472J	Not used
R469		RS1/16S472J	RS1/16S0R0J
R470		RS1/16S472J	RS1/16S0R0J
R471		RS1/16S472J	Not used
R472		RS1/16S472J	Not used
R473		RS1/16S472J	RS1/16S0R0J

Circuit Symbol and No.	Part Name	AVH-P5700DVD/UC	AVH-P4900DVD/UC
A	R474	RS1/16S472J	RS1/16S0R0J
	R475	RS1/16S472J	Not used
	R476	RS1/16S472J	Not used
	R477	RS1/16S101J	RS1/16S0R0J
	R478	RS1/16S101J	RS1/16S0R0J
	R479	RS1/16S101J	RS1/16S0R0J
	R480	RS1/16S101J	RS1/16S0R0J
	R481	RS1/16S102J	Not used
	R482	RS1/16S272J	Not used
B	R483	RS1/16S472J	Not used
	R571	RS1/16S750J	Not used
	R572	RS1/16S472J	Not used
	R573	RS1/16S472J	Not used
	R574	RS1/16S101J	Not used
	R575	RS1/16S472J	Not used
	R576	RS1/16S472J	Not used
	R577	RS1/16S102J	Not used
C	R578	RS1/16S272J	Not used
	R579	RS1/16S472J	Not used
	R580	RS1/16S0R0J	Not used
	R648	RS1/16S681J	Not used
	R694	RS1/16S472J	Not used
	R696	RS1/16S473J	Not used
	R697	RS1/16S473J	Not used
	R755	RS1/16S472J	Not used
D	R756	RS1/16S223J	Not used
	C152	Not used	RS1/16S0R0J
	C153	CKSRYB104K50	CKSRYB103K50
	C301	CKSRYB105K6R3	Not used
	C302	CKSRYB105K6R3	Not used
	C309	CKSRYB104K50	Not used
	C310	CKSRYB104K50	Not used
E	C441	CKSRYB105K6R3	Not used
	C442	CKSRYB105K6R3	Not used
	C443	CKSRYB105K6R3	Not used
	C444	CKSRYB105K6R3	Not used
	C445	CKSRYB105K6R3	Not used
	C446	CKSRYB105K6R3	Not used
	C447	CKSYB475K16	Not used
	C448	CEVLW100M16	Not used

Circuit Symbol and No.	Part Name	AVH-P5700DVD/UC	AVH-P4900DVD/UC
C449		CKSRYB104K50	Not used
C461		CKSYB106K6R3	RS1/4SA0R0J
C462		CKSYB106K6R3	Not used
C463		CKSYB106K6R3	Not used
C464		CKSYB106K6R3	RS1/4SA0R0J
C465		CKSYB106K6R3	Not used
C466		CKSYB106K6R3	RS1/4SA0R0J
C467		CKSYB106K6R3	Not used
C468		CKSYB106K6R3	RS1/4SA0R0J
C469		CCSRCH6R0D50	Not used
C470		CCSRCH6R0D50	Not used
C471		CCSRCH6R0D50	Not used
C472		CCSRCH6R0D50	Not used
C473		CKSRYB104K50	Not used
C474		CKSRYB102K50	Not used
C475		CKSRYB104K50	Not used
C571		CKSYB106K6R3	Not used
C572		CKSYB106K6R3	Not used
C574		CCSRCH6R0D50	Not used
C575		CKSRYB104K50	Not used
C576	10 μ F	CCG1171	Not used
C577		CKSRYB104K50	Not used
C578		CKSRYB104K50	Not used
C753		CKSRYB104K50	Not used

RGB UNIT

Circuit Symbol and No.	Part Name	AVH-P5700DVD/UC	AVH-P4900DVD/UC
D951	Diode	HZU2R7(B1)	Not used
D952	Diode	HZU2R7(B1)	Not used
D953	Diode	HZU2R7(B1)	Not used
D954	Diode	HZU2R7(B1)	Not used
D955	Diode	HZU2R7(B1)	Not used
D956	Diode	HZU2R7(B1)	Not used
D957	Diode	HZU2R7(B1)	Not used
D958	Diode	HZU2R7(B1)	Not used
D959	Diode	HZU2R7(B1)	Not used
D960	Diode	HZU2R7(B1)	Not used
D961	Diode	UDZS5R6(B)	Not used
D962	Diode	UDZS5R6(B)	Not used
D963	Diode	UDZS5R6(B)	Not used
D964	Diode	UDZS5R6(B)	Not used
D965	Diode	UDZS5R6(B)	Not used
R951		Not used	RS1/16S0R0J

MONITOR UNIT

Circuit Symbol and No.	Part Name	AVH-P5700DVD/UC	AVH-P4900DVD/UC
A IC4001	IC	TC90A96AFG	TC90A96BFGSING
IC4601	IC	PEG087A	PEG400A
Q4441	Transistor	2SA1576	2SA1576A
D4351	LED	CL-195PG-CD	CL-195SR-CD
D4352	LED	CL-195PG-CD	CL-195SR-CD
D4353	LED	CL-195PG-CD	CL-195SR-CD
D4354	LED	CL-195PG-CD	CL-195SR-CD
D4371	LED	CL-190UB2-X	Not used
D4372	LED	CL-190UB2-X	Not used
B D4373	LED	CL-190UB2-X	Not used
D5201	LED	CL-195PG-CD	CL-195SR-CD
D5202	LED	CL-195PG-CD	CL-195SR-CD
D5203	LED	CL-195PG-CD	CL-195SR-CD
VR5341	Semi-fixed 15 kΩ(B)	CCP1424	CCP1490
EF4401	EMI Filter	CCG1082	Not used
EF4402	EMI Filter	CCG1082	Not used
C EF4403	EMI Filter	CCG1082	Not used
R4080		Not used	RS1/16S0R0J
R4081		Not used	RS1/16S0R0J
R4082		Not used	RS1/16S0R0J
R4351		RS1/16S271J	RS1/16S391J
R4352		RS1/16S271J	RS1/16S391J
R4353		RS1/16S331J	RS1/16S361J
R4354		RS1/16S331J	RS1/16S361J
R4355		RS1/16S271J	RS1/16S391J
D R4356		RS1/16S271J	RS1/16S391J
R4357		RS1/16S331J	RS1/16S361J
R4358		RS1/16S331J	RS1/16S361J
R4371		RS1/16S101J	Not used
R4372		RS1/16S101J	Not used
R4373		RS1/16S101J	Not used
R4374		RS1/16S221J	Not used
R4375		RS1/16S221J	Not used
E R4376		RS1/16S221J	Not used
R4377		RS1/16S221J	Not used
R4378		RS1/16S221J	Not used
R5223		RS1/16SS101J	RS1/16SS121J
R5224		RS1/16SS101J	RS1/16SS121J
R5348		RS1/16S563J	RS1/16S5602D
C4371		CKSRYB104K50	Not used
C4372		CKSRYB104K50	Not used
F C4373		CKSRYB104K50	Not used

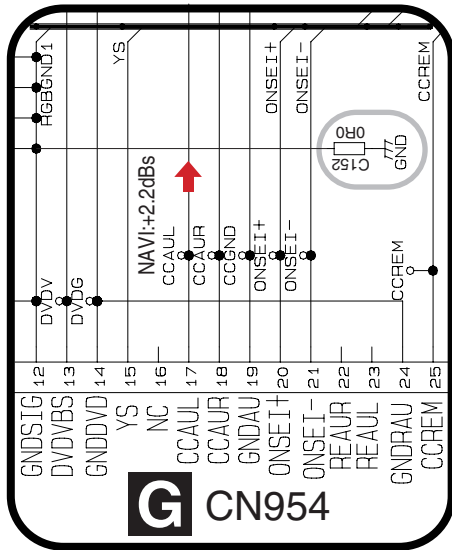
KEYBOARD UNIT

Circuit Symbol and No.	Part Name	AVH-P5700DVD/UC	AVH-P4900DVD/UC
D5510	LED	CL-195PG-CD	CL-195SR-CD
D5512	LED	CL-195PG-CD	CL-195SR-CD
D5514	LED	CL-195PG-CD	CL-195SR-CD
D5516	LED	CL-195PG-CD	CL-195SR-CD
D5518	LED	CL-195PG-CD	CL-195SR-CD
D5520	LED	CL-195PG-CD	CL-195SR-CD
D5522	LED	CL-195PG-CD	CL-195SR-CD
D5524	LED	CL-195PG-CD	CL-195SR-CD
D5526	LED	CL-195PG-CD	CL-195SR-CD
R5530		RS1/16S121J	RS1/16S151J
R5531		RS1/16S121J	RS1/16S151J
R5532		RS1/16S121J	RS1/16S151J
R5533		RS1/16S121J	RS1/16S151J
R5534		RS1/16S121J	RS1/16S151J
R5535		RS1/16S121J	RS1/16S151J

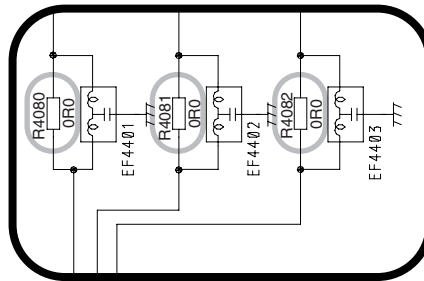
DVD CORE UNIT

Circuit Symbol and No.	Part Name	AVH-P5700DVD/UC	AVH-P4900DVD/UC
IC1602	IC	TC7SH86FU	TC7SH86FUS1

Page 43 Address 6F



Page 51 Address 6C



Page 69 Address 8D

