

# Training Manual

For LED TV D7000 Series

**UE40D7000L**

**UE46D7000L**

**UE55D7000L**

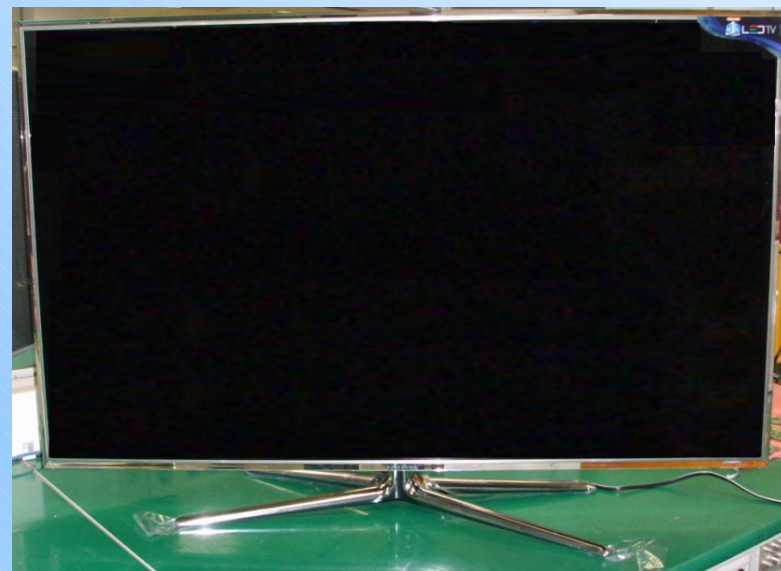
# Contents

- . Concept
- . Specification
- . Front/Rear View
- . Layout
- . Disassembly
- . Key Feature

# Product Concept



- New Design for maximizing 3D immersion
- Web Browsing - Internet@ TV  
Satisfy the Unmet Needs to enjoy Various  
Multimedia function
- 3D Dimming for the Highest picture quality
- 1080P FULL HD
- 4HDMI, HDMI CEC support
- 240Hz Auto Motion Plus
- Media Play
- All Share
- Smart Hub
- Full browser
- Built-in Wifi



## UD7L

- Vesel: (Factory Option: W-milky)
- Panel: 46", 55", Super Clear
- memory: 2G (internet TV & ACAP service)
- power consumption: 46": 150W / 55": 160W / Standby < 0.1W

# □ . Specification




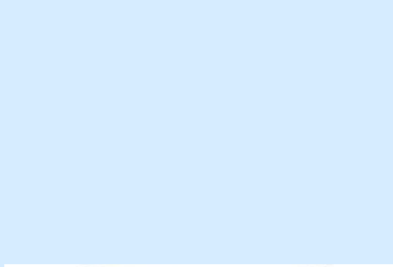
## ○ Specification

Items	Specification
	UE40D7000L/UE46D7000L/UE55D7000L
Size (W*D*H) with Stand	40" : 908.6 X 29.7 X 524.9 mm 46" : 1041.1 X 29.7 X 599.4 mm 55" : 1232.6 X 29.7 X 707.2 mm
Weight with Stand	40" : 12.0 kg 46" : 14.3 kg 55" : 18.6 kg
Panel Resolution	1920*1080
A/V	EU : 1 Component-AV
S-VIDEO	No
component	1 component-AV (480i/p,720p,1080i/p)
SCART	EU : 2 SCART / ASIA, Aus : No SCART
PC	1 Dsub
HDMI	4 HDMI
Tuner	<input type="checkbox"/> UD8000 U.K. & Nordic :1 PAL/SECAM/NIM/QAM/Cable/T2/S2 tuner <input type="checkbox"/> UD8000 other EU :1 PAL/SECAM/NIM/QAM/Cable/S2 tuner
USB	3 USB
Sound Output	40":10W/ 46":10W/ 55":15W
DNiE	Yes
PIP	Yes
Sound option	ThearterSurround HD
Headphone	1 H/P
Response time	3ms
Luminance [cd/m2, typical]	450
C/R	Mega CR (1,000,000:1)
Anynet+(hdmi cec)	Yes
View Angle(H/V)	178/178
Power Supply	AC 110~220V,60Hz
Power Consumption	40": 130W/46": 150W/55": 160W
Stand-by Power consumption	0.1W

# Specification

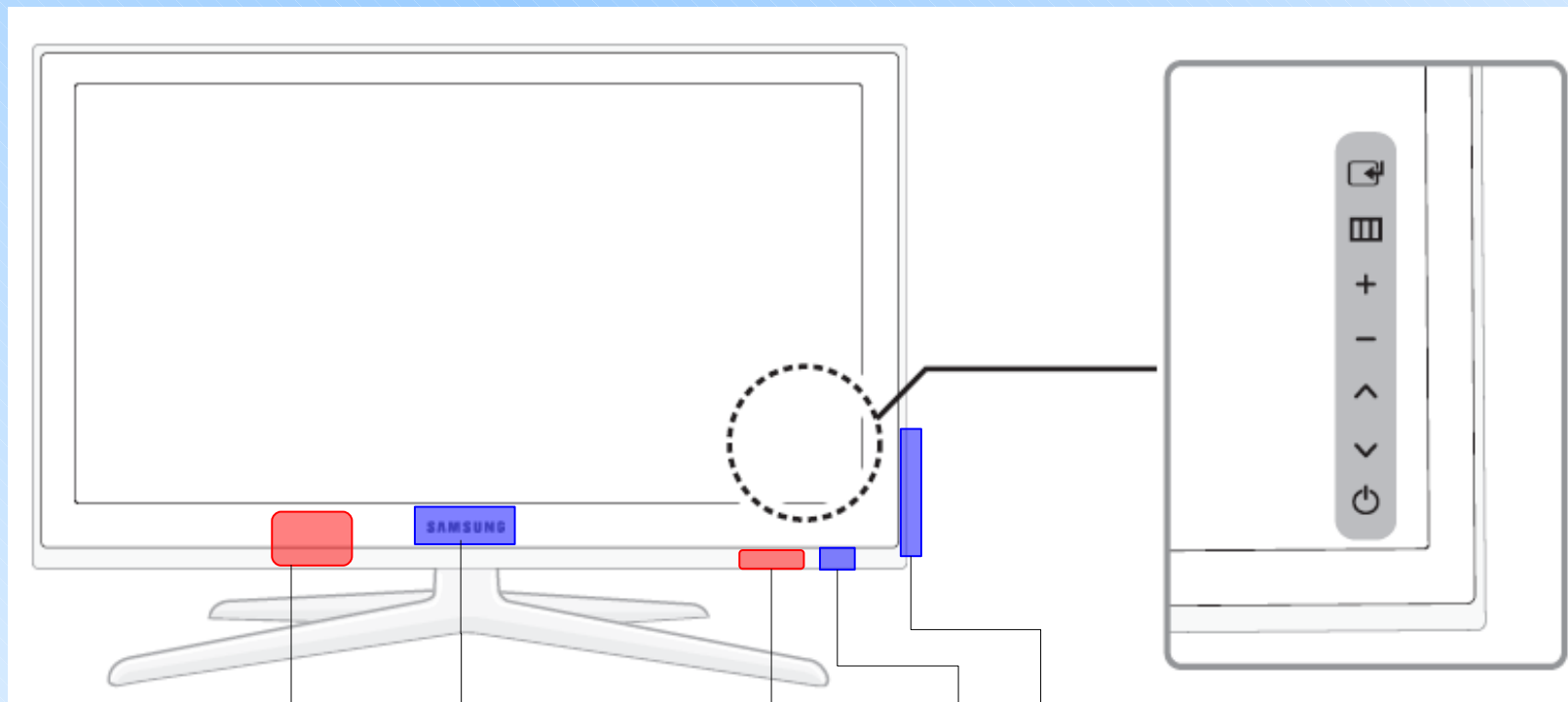


## Spec. Comparison

Model		D7000	G7000
Design			
Display type		LED TV	LED TV
LCD panel		TFT LCD PANEL 240Hz	TFT LCD PANEL 240Hz
Dimensions (W x H x D)	40"	908.6 X 29.7 X 524.9 mm with stand 908.6 X 241.3 X 600 mm without stand	957.4 X 26.5 X 578.7 mm with stand 957.4 X 267.7 X 648.4 mm without stand
	46"	1041.1 X 29.7 X 599.4 mm with stand 1041.1 X 276.5 X 607.5 mm without stand	1092.3 X 653.2 X 26.5 mm with stand 1092.3 X 302.9 X 724.3 mm without stand
	55"	1232.6 X 29.7 X 707.2 mm with stand 1232.6 X 309.3 X 789.7 mm without stand	1283.4 X 26.5 X 762.3 mm with stand 1283.4 X 302.2 X 833.4 mm without stand
Weight		40" : 10.0kg_without stand 12.0kg_with stand 40" : 12.4kg_without stand 14.3kg_with stand 55" : 16.2kg_without stand 18.6kg_with stand	40" : 13.2kg_without stand 15.4kg_with stand 40" : 16.8kg_without stand 19.1kg_with stand 55" : 22.2kg_without stand 24.5kg_with stand
Contrast Ratio		Mega CR	Mega CR
AUTO MOTION PLUS 240HZ		O (Napoli)	O (Reading)
Speaker out		40",46" : 10W +10W/ 55" :15W+15W	40",46" : 10W +10W/ 55" :15W+15W
Surround Sound		SRS Theater Sound	SRS Theater Sound
Function		3D,MOIP,Media Bridge, AllShare,Internet TV, Built-in WiFi, Full Browser,Bluetooth	3D,MOIP,Media Bridge, AllShare,Internet TV

# □ . Front / Rear View

## ○ Viewing Front (40")



**Samsung Logo : Light up  
(Light Effect)**

**Built In Wi-Fi**

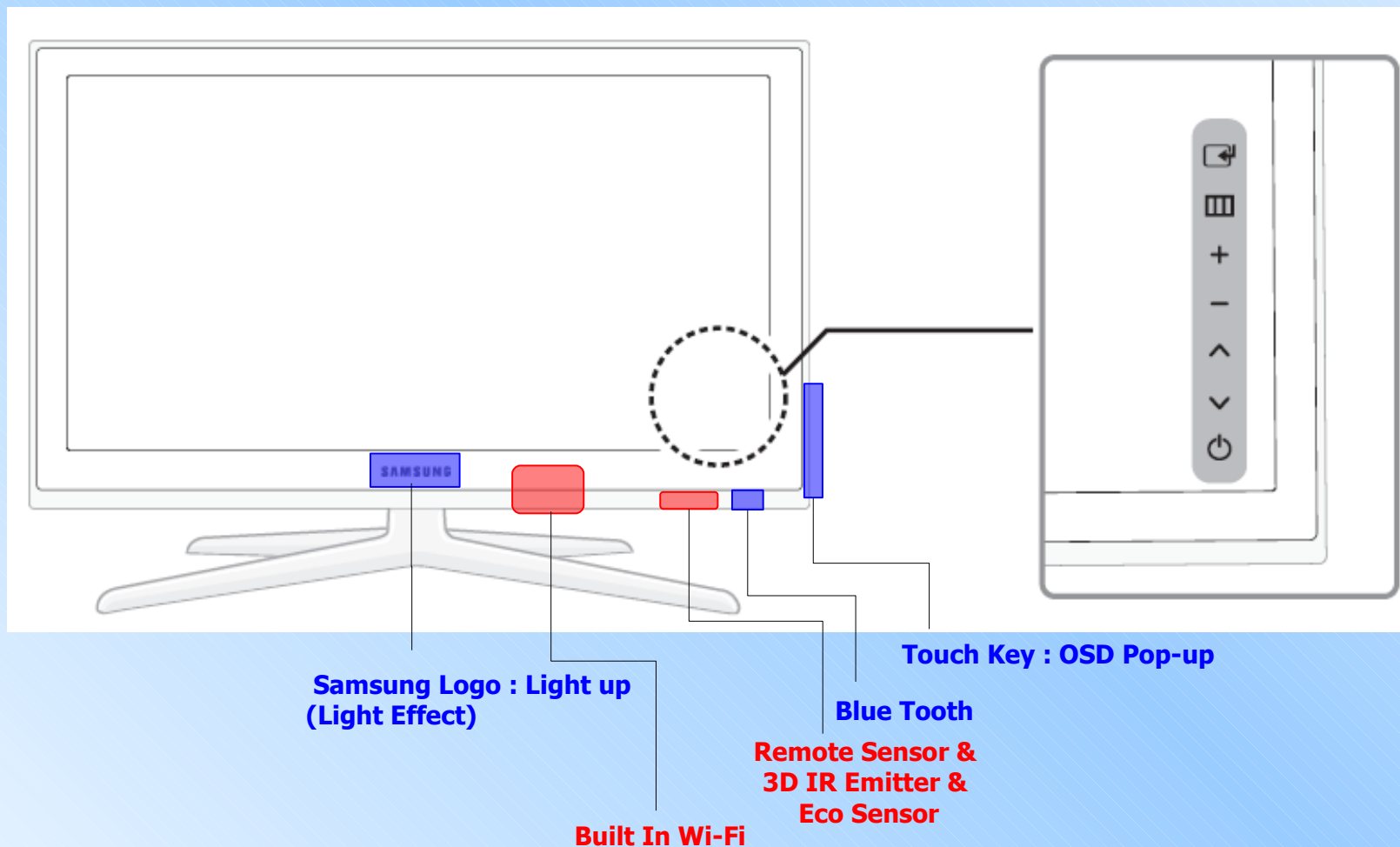
**Touch Key : OSD Pop-up**

**Blue Tooth**

**Remote Sensor &  
3D IR Emitter &  
Eco Sensor**

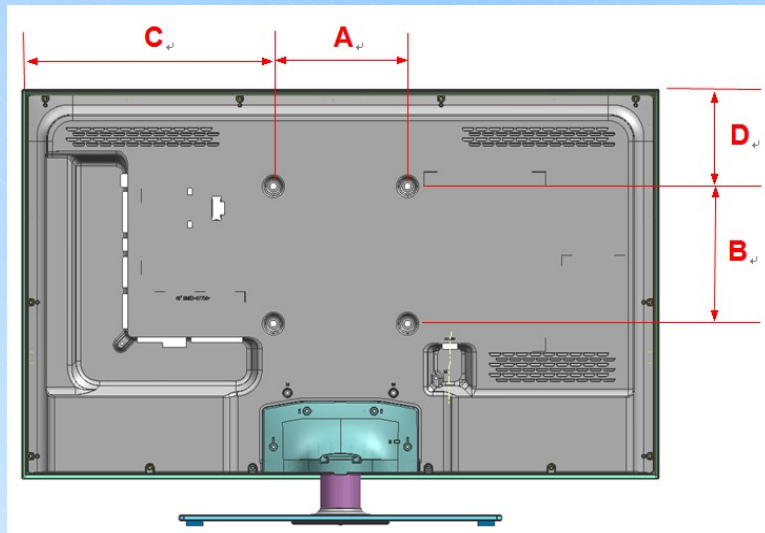
# □ . Front / Rear View

## ○ Viewing Front (46",55")

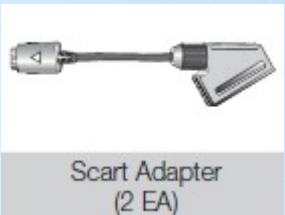


# □ . Front / Rear View

## ○ Rear



□ Adaptors are used to connect each inputs



Scart Adapter  
(2 EA)



Component Adapter



CI Card Adapter



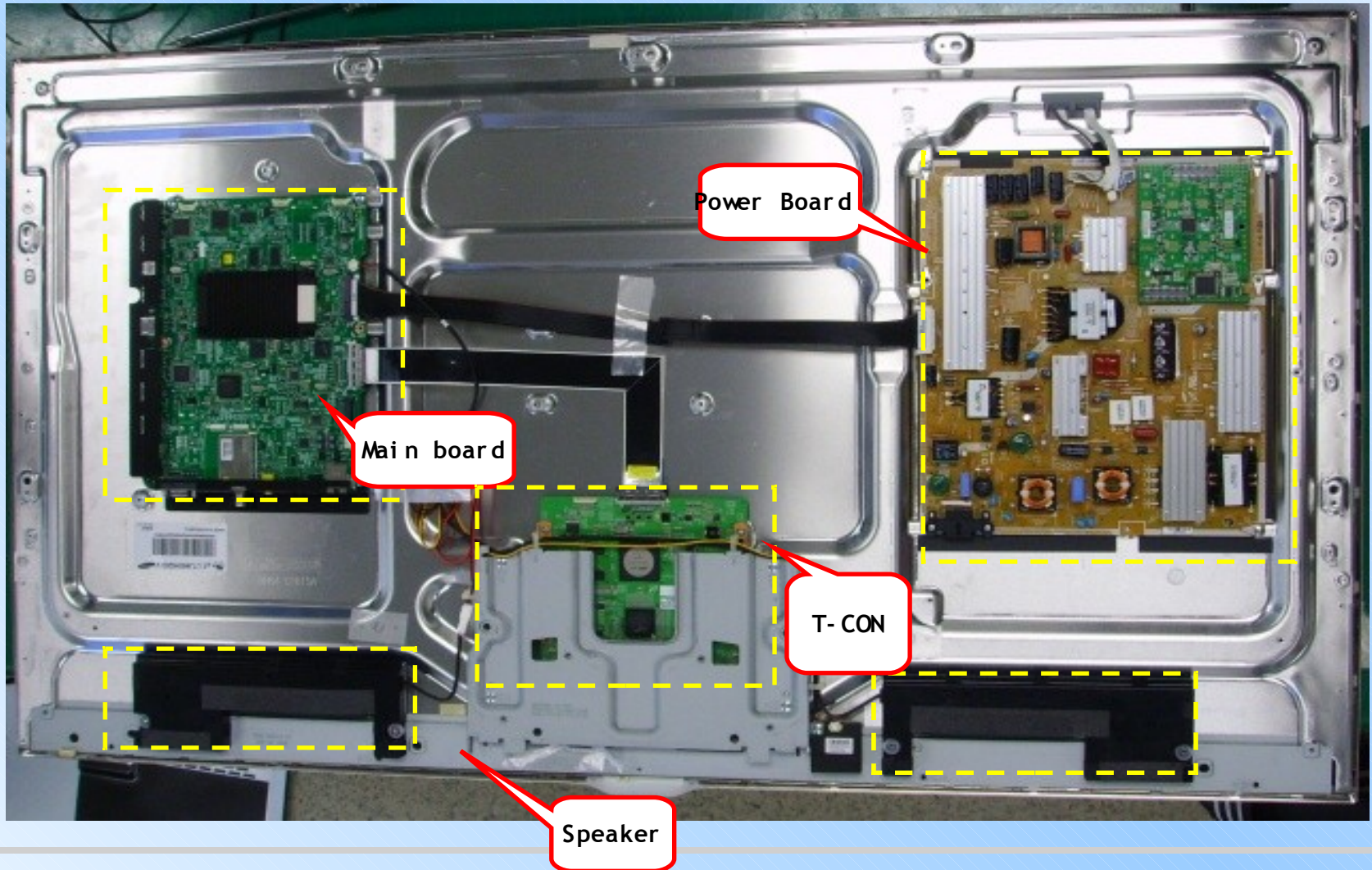


# Layout



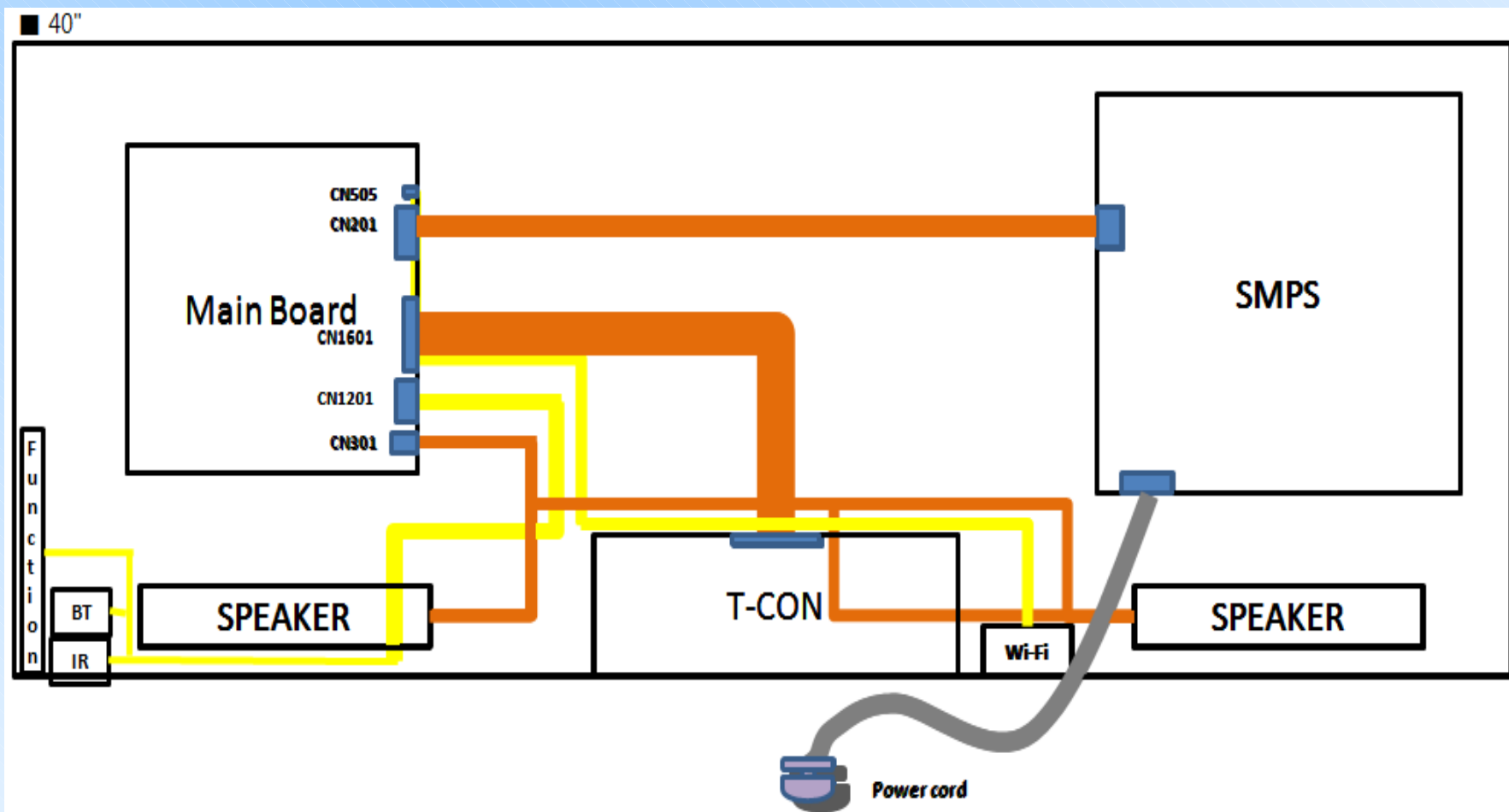
## Inner Feature of UD7X

IP board, Main board, Panel



# Layout

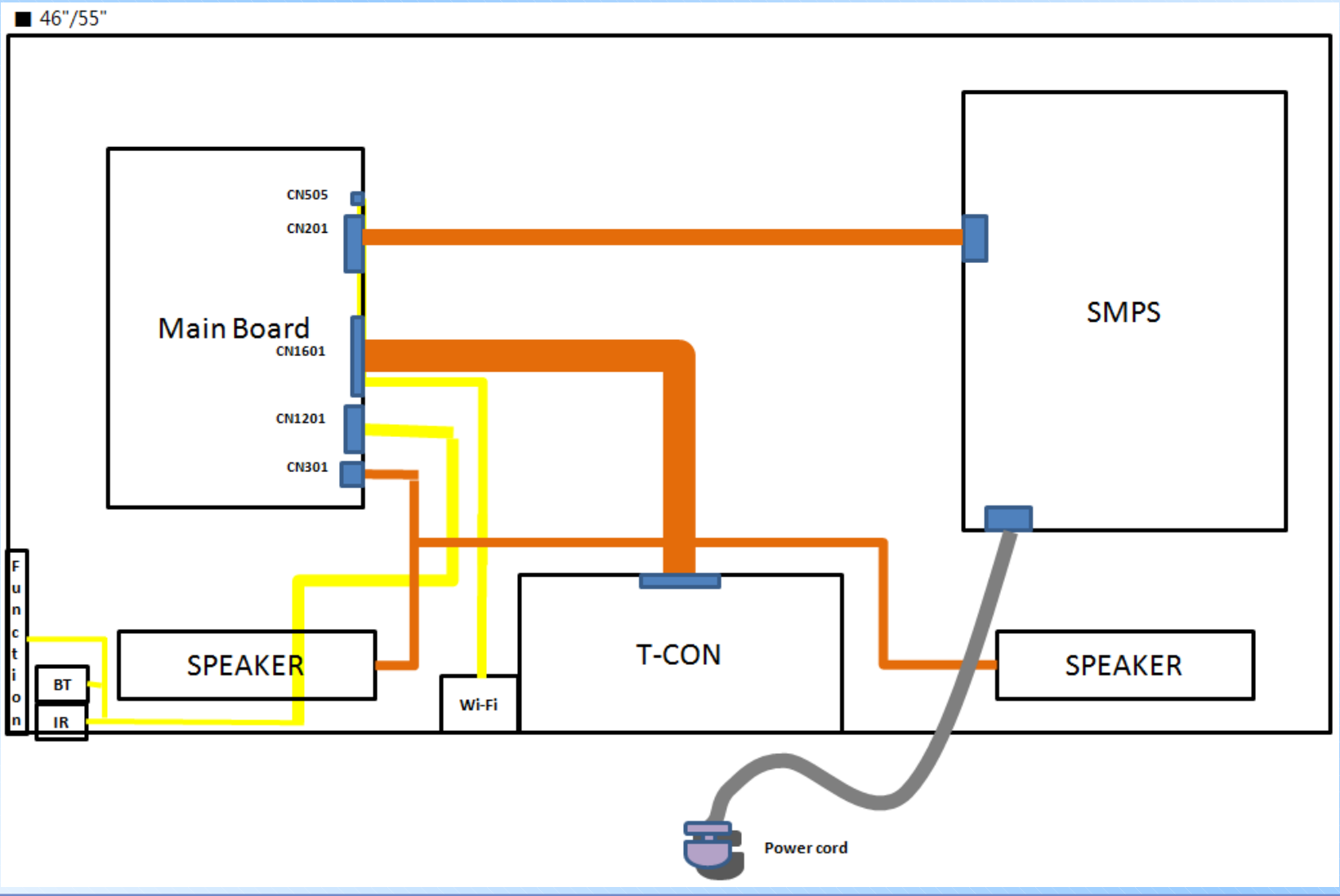
## Wiring Diagram (40")



# Layout



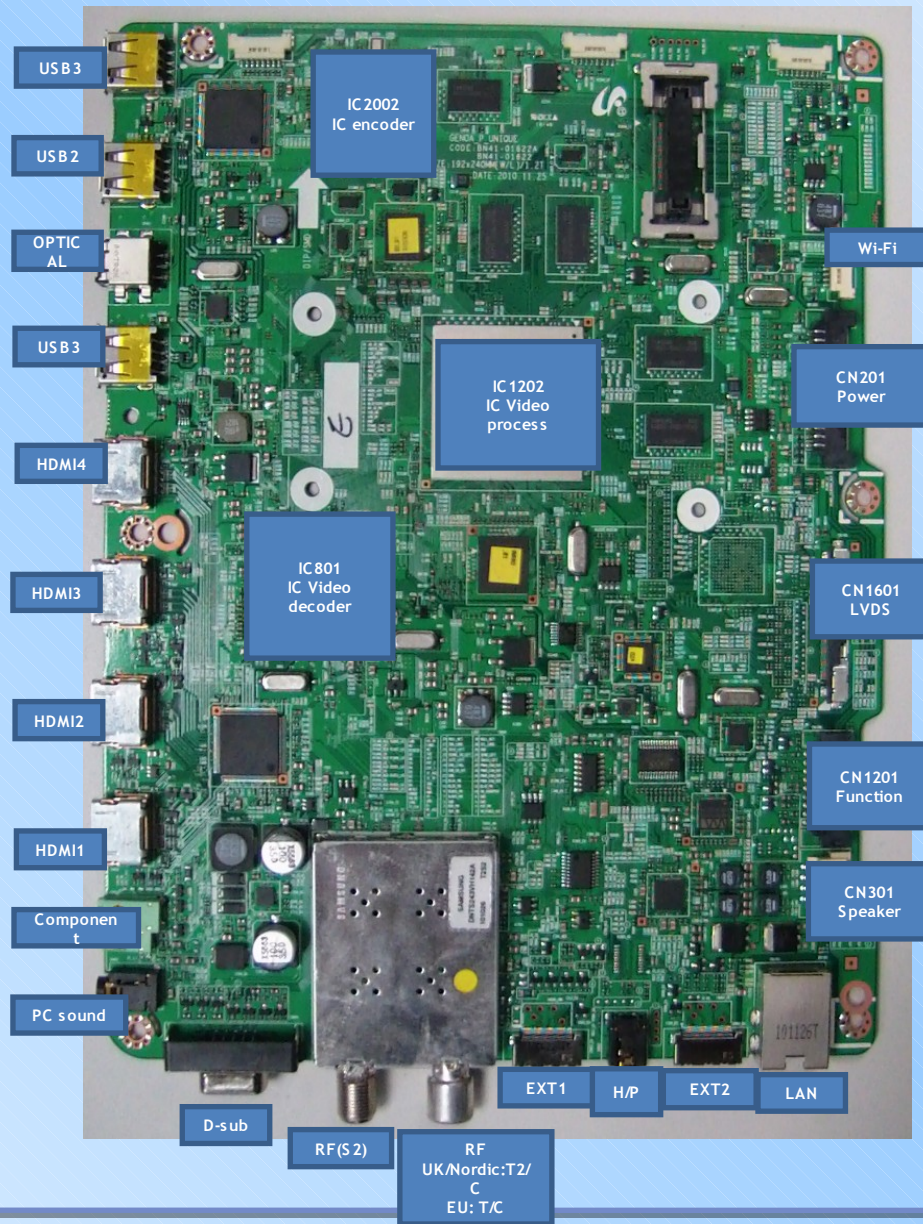
## Wiring Diagram (46",55")



# Layout



## Main Board Layout

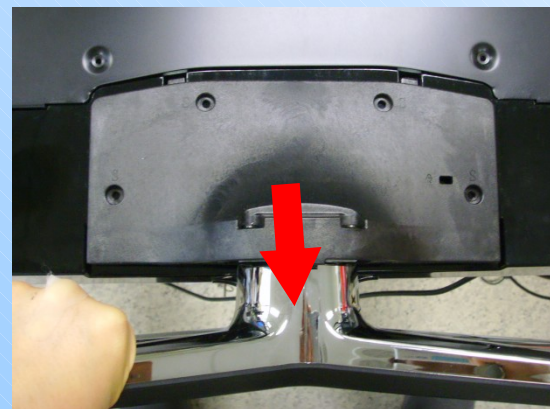


# □. Disassembly

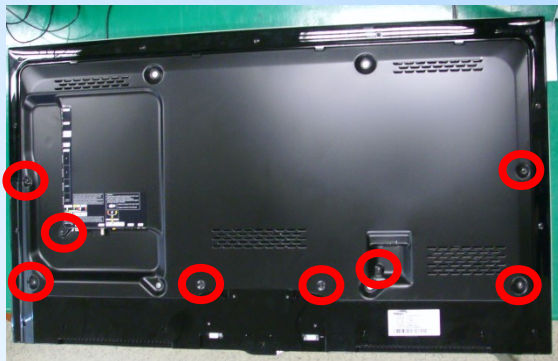
□□□□ □□□□

SVC Manual □□□□ □□□□

1. Place TV face down on cushioned table.  
Remove screws from the Stand.  
Remove stand.



2. Remove the screws of rear cover.



# Disassembly



3. Lift up and remove the rear- cover.

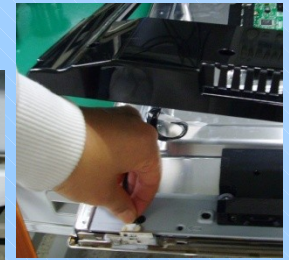
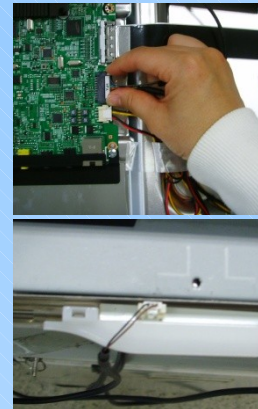
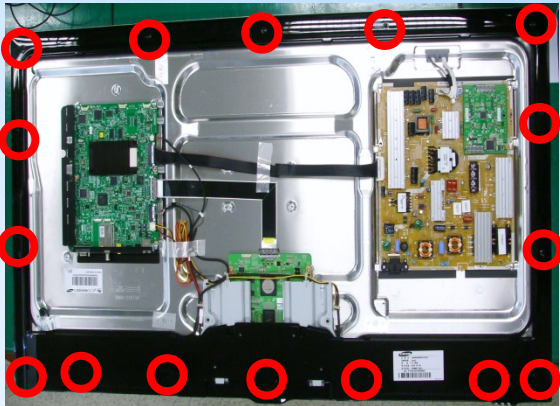
**\*Caution :** Be careful when you lift up the rear- cover, It's really sharp.



4. Remove the screws of middle- cover.

5. Lift up and remove the middle- cover.

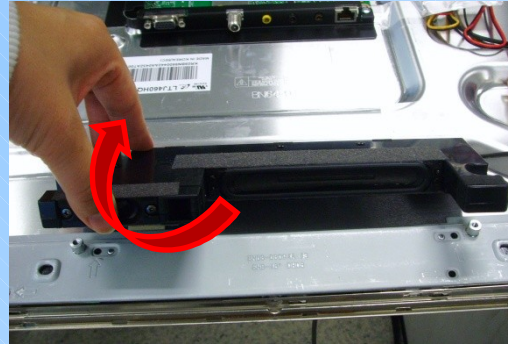
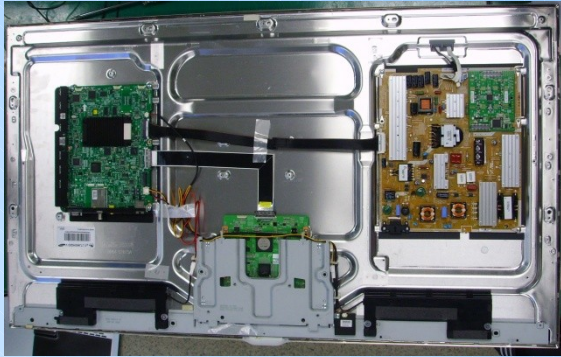
**\*Caution:** Remove the function cable, 3D emitter cable and deco cable before removing the middle cover



# Disassembly

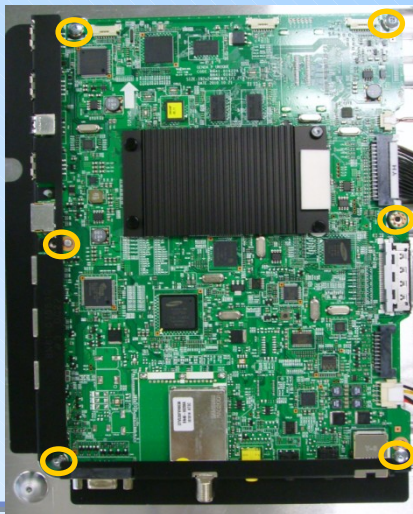
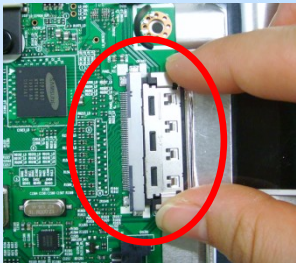


- 6. Remove the Speakers(R/L)
- 7. Remove the WiFi module



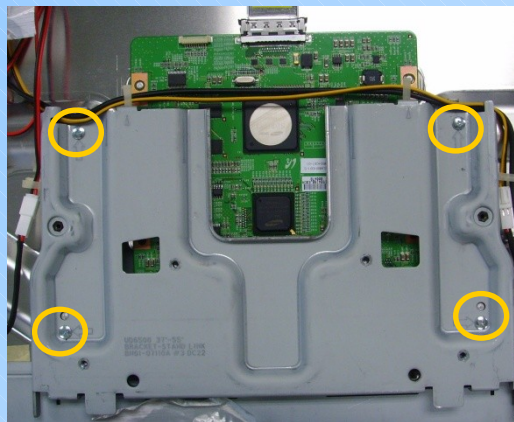
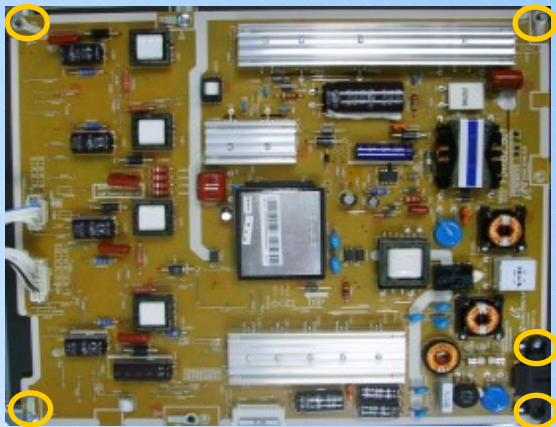
- 8. Remove the screws of main board.

**\*Caution** :Disconnect all cable connectors before removing any board

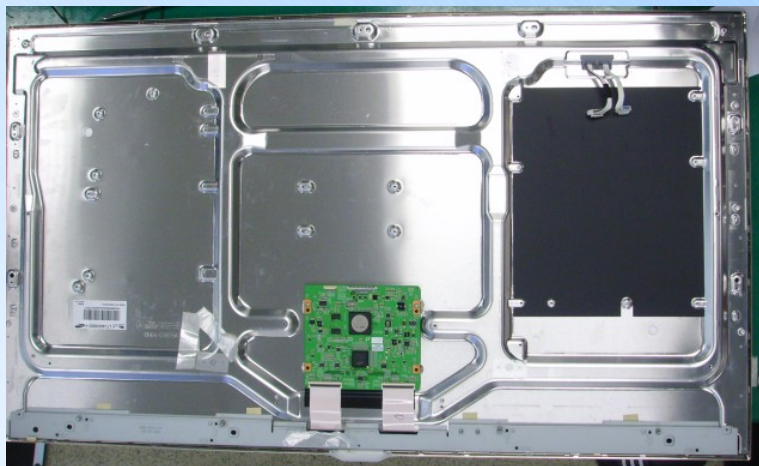


# Disassembly

- 9. Remove the screws of IP board.
- 10. Remove the T- CON Bracket



Panel 40" / 46" / 55"





# □. Key Feature

- □ / □□□ □□□□

## ○ 3D TV

### - What is 3D TV

- A system that display 3D images artificially
- How? Using binocular time delay
  - ①Left eye recognizes left image, right eye recognizes right image.
  - ②Human eyes be far away each other 65mm horizontally.  
So each eye feels a little bit of time delay of left and right information.  
Human brain merges those images and can feel three- dimensional.

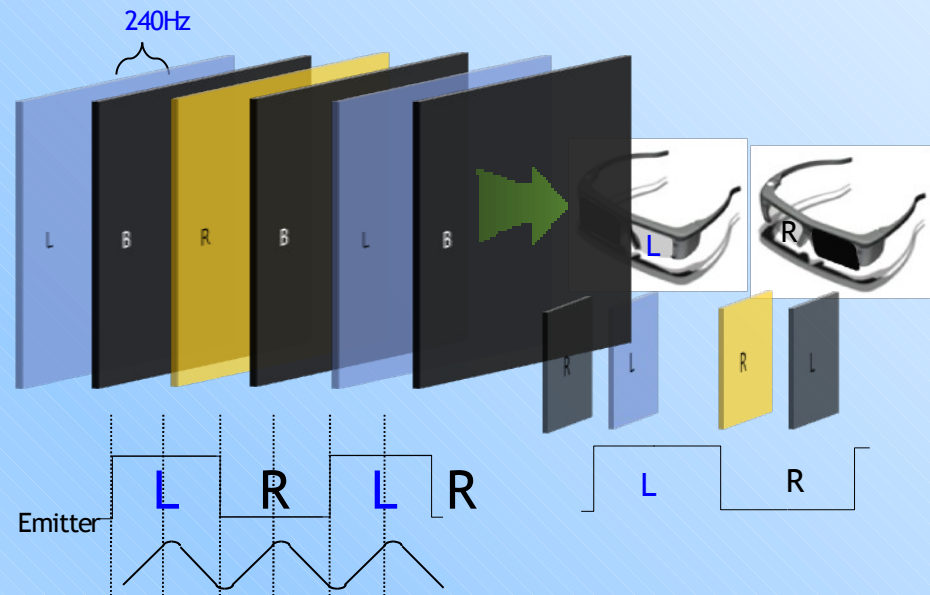


▶Side by side

# □. Key Feature

## - How to operate




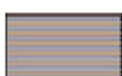

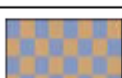

- 3D TV shows left and right image by turns.
- At the same time, TV gives synchronizing signal to 3D glasses through 3D emitter.
- 3D glasses shutter each lens by turns according to this signal



# □ . Key Feature





## - 3D Formats

Format	Input images	explanation	Input source	notes
Frame Packing		<ul style="list-style-type: none"> <li>Inserting Blink Active Space between Left and Right images.</li> <li>* Full resolution : 1920 x 1080 x 2 (Left and Right each) + Blink = 1920 x 2205</li> </ul>	HDMI 1.4	<ol style="list-style-type: none"> <li>HDMI 1.4 standard format</li> <li>Automatically activating (Not in the menu or UI)</li> <li>BD format</li> </ol>
Top & Bottom		<ul style="list-style-type: none"> <li>In 1 frame, Left image on the upper half, Right image on the bottom half.</li> <li>* Vertically half resolution</li> </ul>	HDMI, USB, DTV(VOD), PC	3D Broadcasting Format
Side by Side		<ul style="list-style-type: none"> <li>In 1 frame, Left image on the left half, Right image on the right half.</li> <li>* Horizontally half resolution</li> </ul>	HDMI, USB, DTV(VOD), PC	3D Broadcasting Format
Line by Line		<ul style="list-style-type: none"> <li>In 1 frame, every horizontal line, Left and Right image in turn.</li> <li>* Vertically half resolution</li> </ul>	PC	<ol style="list-style-type: none"> <li>MPEG encoding impossible</li> <li>Only in PC</li> </ol>
Vertical Stripe		<ul style="list-style-type: none"> <li>In 1 frame, every vertical line, Left and Right image in turn.</li> <li>* Horizontally half resolution</li> </ul>	PC	<ol style="list-style-type: none"> <li>MPEG encoding impossible</li> <li>Only in PC</li> </ol>
Checker Board		<ul style="list-style-type: none"> <li>In 1 frame, every pixel, Left and Right image in turn.</li> <li>* Half resolution both vertically and horizontally</li> </ul>	PC	<ol style="list-style-type: none"> <li>MPEG encoding impossible</li> <li>Only in PC</li> </ol>
Frame Sequential		<ul style="list-style-type: none"> <li>Left And Right image in turn in every frame.</li> <li>Full resolution spatially but Half resolution timely.</li> </ul>	PC	
2D → 3D	Extract Left and Right images artificially from normal 2D contents input and show it in 3D. (a function of TV)			
3D → 2D	When watching 3D TV (input is 3D source) , if a viewer feels tired of watching 3D TV, a viewer can change the TV into 2D. (In this case , TV only displays one of Left and Right images)			

# □. Key Feature

## - 3D Formats

Depth	Only activating in '2D → 3D Mode' Control the depth of 3D. 1~10 steps, Tiredness goes higher as depth goes higher.
L/R correction	Switch the position of Left and Right images so that correspond with 3D glasses.
3D Disable (3D off)	'3D off' has below meanings according to present modes . (1) In 2D → 3D Mode : coming back to 2D
	
	(2) In 3D mode 

# Key Feature



## \* How to Use Blue tooth 3D Glasses

### 3D Active Glasses

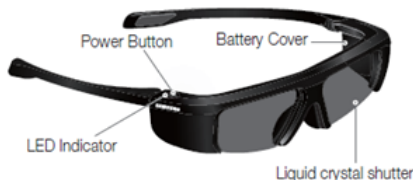
### SSG-3100GB

#### Features

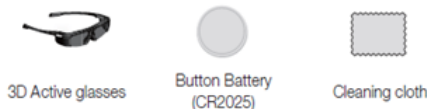
The 3D glasses enable you to view 3D images. To view 3D images, you need both a pair of 3D glasses and a Samsung 3D TV. SSG-3100GB allows you to connect devices via the 2.45GHz RF band.

(The Samsung 3D glasses cannot connect to a non-Samsung wireless communication device.)

#### Parts



#### Components



#### Performing 3D Active Glasse pairing

(What is Pairing? It is a process to share Information and connect 3D Glasses with a 3D TV.)

##### ◆ For the initial pairing

1. If the user takes the 3D glasses out of the box and briefly presses the power button, the glasses are turned on and the pairing process is started automatically.
  - ▷ Be sure to power on the TV before you press the power button.
2. If the first attempt to pair fails, turn on the TV (2D or 3D) and press the Power button on the 3D glasses. The 3D glasses will power on and there will be another attempt to pair.

- ◆ **Turning the glasses on**  
Press the power button briefly. The green LED is turned on for 3 seconds.
- ◆ **Turning the glasses off**  
Press the power button briefly. The red LED is turned on for 3 seconds.
- ◆ **Performing the pairing process.**  
The green and red LEDs will blink for 2 seconds if pairing is under progress.

#### ◆ Operating range

Recommended viewing distance	2-6m
Recommended pairing distance	50 cm or less

##### ◆ To perform the pairing process again

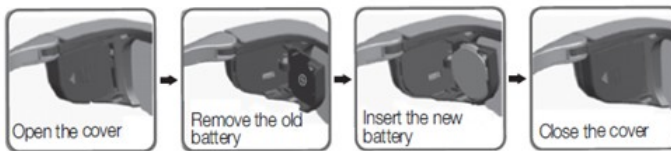
1. If a user presses and holds the power button on the 3D glasses for at least 2 seconds when it is turned off, the power is turned on and the pairing process starts.
  - ▷ If the user presses and holds the power button of the 3D glasses for at least 2 seconds, the pairing process starts.
  - ▷ If the pairing process fails, the power is turned off.
  - ▷ The maximum viewing distance may vary depending on obstacles (human body, metal, wall, etc.) or electromagnetic wave near the 3D glasses.
  - ▷ Turn off the 3D glasses while they are not in use. If you leave the 3D glasses on, the battery lifespan decreases.

##### ◆ Re-pairing is required in the following circumstances

- ▷ The 3D glasses do not function even when the power button is pressed on the 3D TV after repair.
- ▷ You want to enjoy a 3D video on a newly purchased Samsung 3D TV released in 2011.

##### ◆ Replacing the Batteries

Red LED blinks every two seconds continually, replace the batteries with new ones.



#### Specifications (Model Number: SSG-3100GB)

Optics	Shutters	Liquid crystal	Transmittance	35±2%
	Recommended viewing distance	2-6m	Field Rate	120 fields/s
Weight	Glasses	33.1g (including the battery: 35.4g)		
Power	Glasses	One 3V lithium/manganese dioxide battery 3V(CR2025)		
	Glasses	1.3mA (Average)		
Power Consumption	Battery	Type	165mAh, 3.0V (CR2025)	
		Operating time when On	70 hours	
Operating Conditions	Operating Temperature	0 °F to 40 °F		
	Custody Temperature	-20 °F to 60 °F		

# □. Key Feature



## Smart Hub

- The Gateway to all content integrated in one place
- All search, web browser, samsung apps
- Supply differentiated player according to the contents
- Support various USB device (multi media)



## Detail

- It's all integrated to guide you to easier and diverse entertainment choices
- Control your entertainment life with easy and simple user friendly UI
- Access to diverse Apps that are adding up every day
- Customize your TV, by App grouping & sorting to your taste

# □ . Key Feature



## 3" Premium remote

- Universal Remote Control
- Wireless PC content Control
- Clone View



## Detail

Gives more convenient access to your TV & Legacy devices

- Universal Remote Control : One Remote Controller for your TV, STB and AV devices in living room
- Wireless PC content Control : Check content list of DLNA Certified device in 3" LCD and play it in Main TV.
- Clone view : Watch TV programs or BD/DVD titles in 3-inch screen on remote and TV.

# □ . Key Feature



## Built in Wi-Fi

- Easy Set-up & Optimized
  - One Foot Connection
  - USB configuration
- Priority QoS (Quality of Service)



## Detail

### Easy Set-up & Optimized Solution for using Ethernet

- One Foot Connection : Establish a Wi-Fi connection to any compatible device placed within 25cm distance (Samsung Patent pending)
- USB configuration : Insert USB to router → Insert USB to Samsung TV  
Configurations is safely stored on USB drive and restored on TV

### Priority QoS (Quality of Service) Solution for using Ethernet

- Prioritize streaming content to the TV
- Ensure the best streaming content and throughput speeds are given to the TV




# □. Key Feature





## Web Browser

Using the Web Browser function provided by the SMART HUB, you can surf the Internet on your TV.



To open **Web Browser**, press the ◀ / ▶ / ▲ / ▼ buttons to select **Web Browser**, and then press the **ENTER**  button. The **Web Browser** is optimized for the Webkit system and may function differently from Internet Explorer.

When the Web Browser opens, the cursor is in Tab Mode. In Tab Mode, the cursor highlights text or objects, or surrounds them with a blue rectangle. To move the cursor in Tab Mode, use the ◀ / ▶ / ▲ / ▼ buttons. Press **ENTER**  to select. To scroll the screen ▲ or ▼ down, use the ◀ or ▶ buttons.

You can change from Tab Mode to Pointer Mode by pressing the Yellow **C** button. Use the arrow buttons to move the pointer. Press **ENTER**  to select.