

RJ17/RJ18/T2
É LIGADO PARA O GND
ATRAVÉS DO DISS. HS2

D

C

B

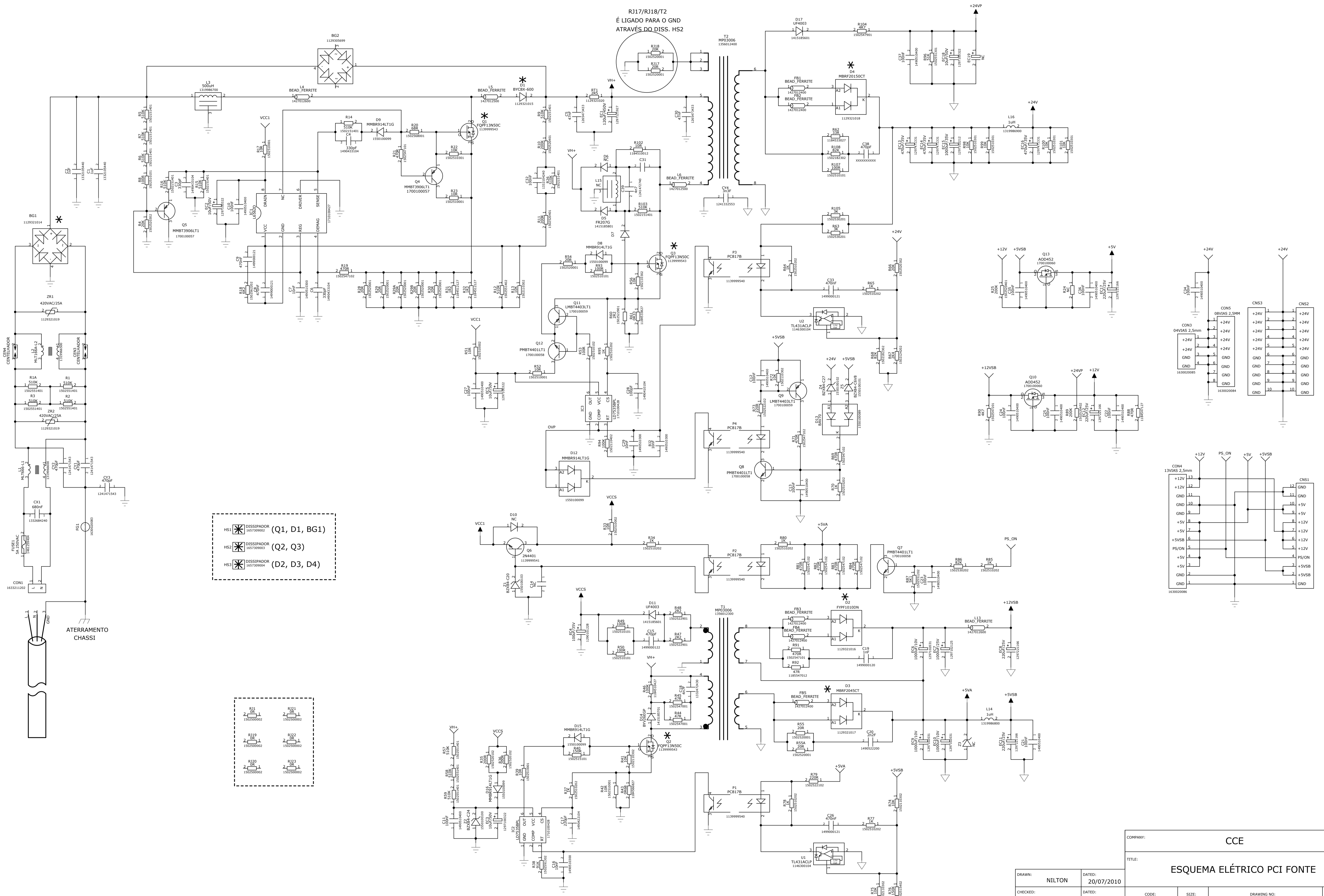
A

D

C

B

A



HS1 DISSIPADOR (Q1, D1, BG1)
 HS2 DISSIPADOR (Q2, Q3)
 HS3 DISSIPADOR (D2, D3, D4)

R31
 R32
 R33
 R34
 R35
 R36
 R37
 R38
 R39
 R40
 R41
 R42
 R43
 R44
 R45
 R46
 R47
 R48
 R49
 R50
 R51
 R52
 R53
 R54
 R55
 R56
 R57
 R58
 R59
 R60
 R61
 R62
 R63
 R64
 R65
 R66
 R67
 R68
 R69
 R70
 R71
 R72
 R73
 R74
 R75
 R76
 R77
 R78
 R79
 R80
 R81
 R82
 R83
 R84
 R85
 R86
 R87
 R88
 R89
 R90
 R91
 R92
 R93
 R94
 R95
 R96
 R97
 R98
 R99
 R100

PCI CÓDIGO 1.10.73090.04

COMPANY:		CCE			
TITLE:		ESQUEMA ELÉTRICO PCI FONTE			
DRAWN:	NILTON	DATED:	20/07/2010	CODE:	1007309003
CHECKED:		DATED:		SIZE:	A1
QUALITY CONTROL:		DATED:		DRAWING NO.:	D32
RELEASED:		DATED:		REV.:	N/A
SCALE:		SEM		SHEET: OF 1	