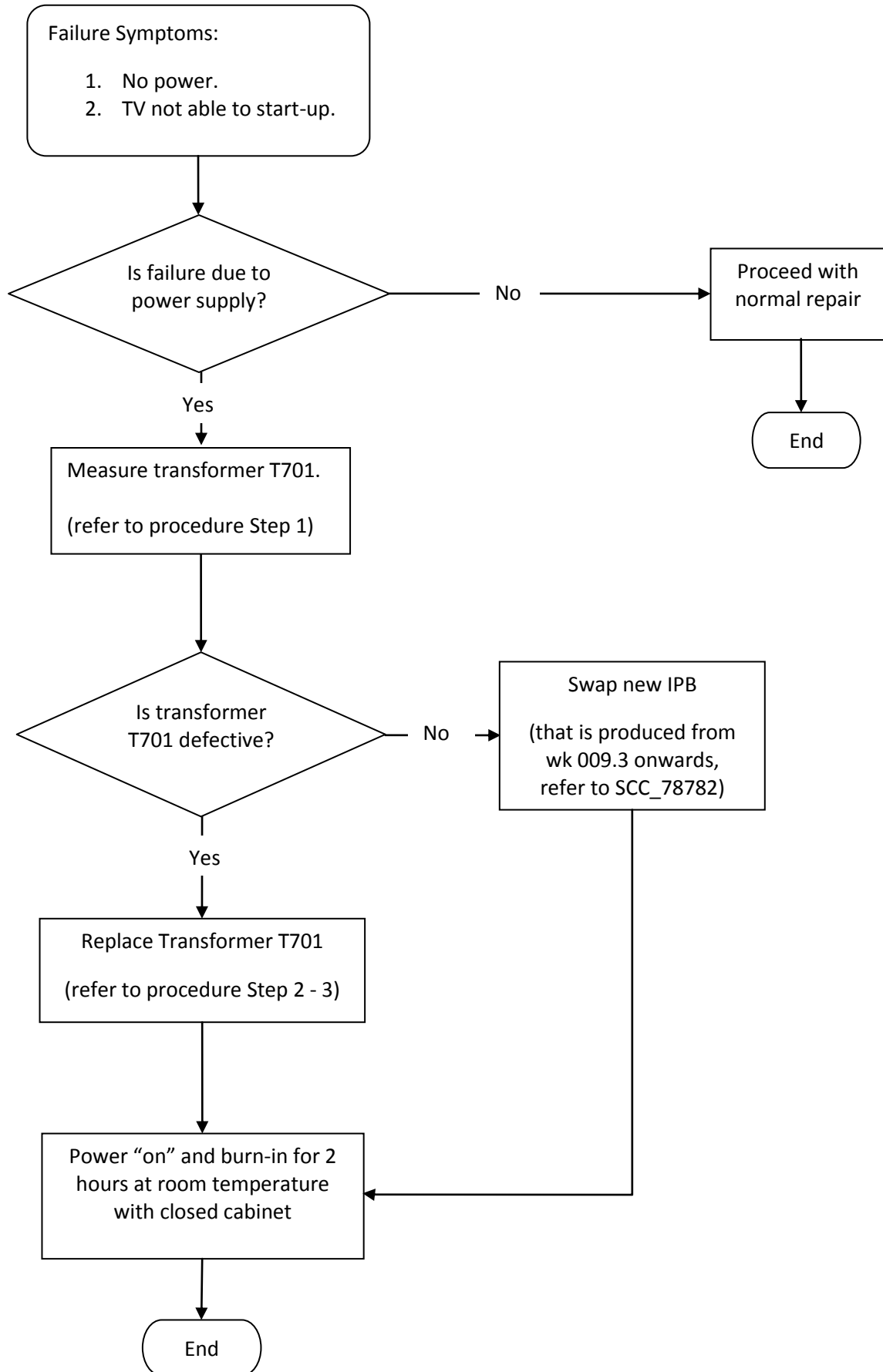


Repair Instruction for No power/TV not able to start-up symptoms



Repair instruction for Power Supply

Affected sets:

CTN	Chassis
32PFL5604H/12_2 32PFL5604H/12_4 32PFL5624H/12_2 32PFL5624H/12_4	Q543.3E LA

Only applicable to these power supply modules:

IPB Model No	IPB 12NC
32 PLHL-T807A-MPR0.2	272217190104

Components location and order code

Location	Component Description	Supplier Part No	Philips 12NC
T701	TRANSFORMER T808A	2130KP0352A-F	996510045987

Component checking and repair procedure:

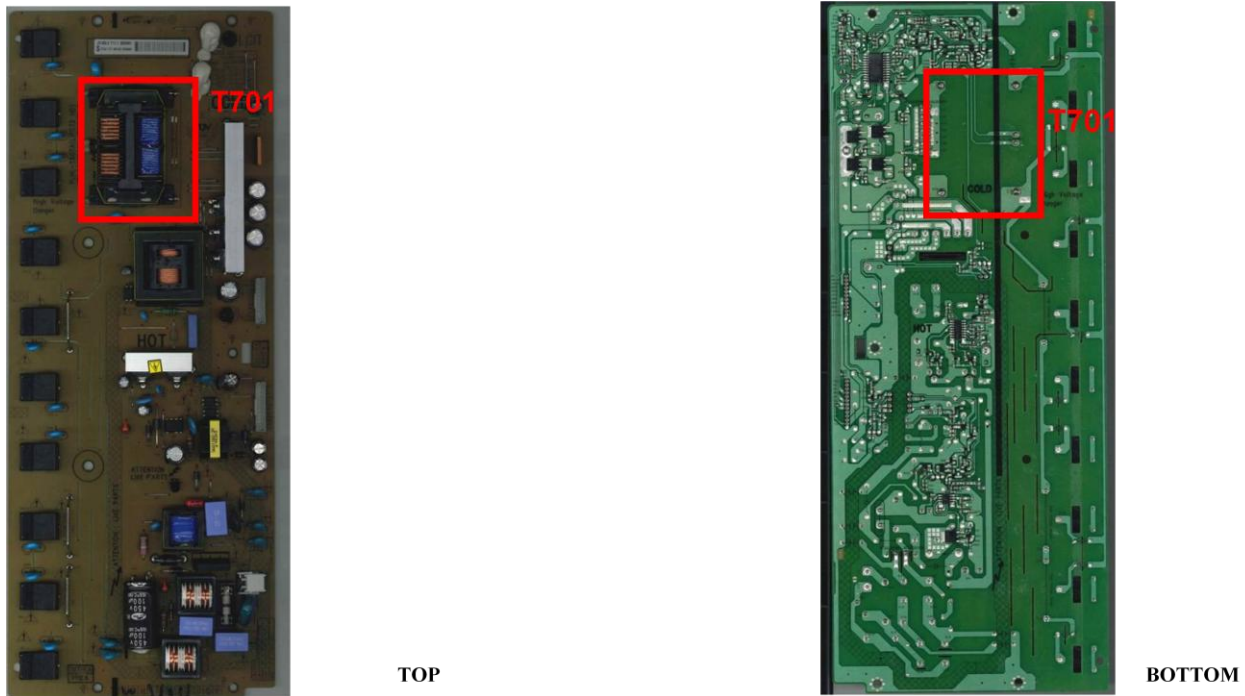


Fig.1 Location of Transformer T701

STEPS:

1. Measure transformer T701 to confirm if it is defective.

Equipment: HIOKI 3522-50 LCR HiTESTER (or equivalent)

Setting:

- Frequency: DC, 10kHz
- Voltage: 1V

a. Measure the resistance (R) between pin 4 and 5 of T701 (Fig.2). If measured R is > 1 kohm = Not OK.

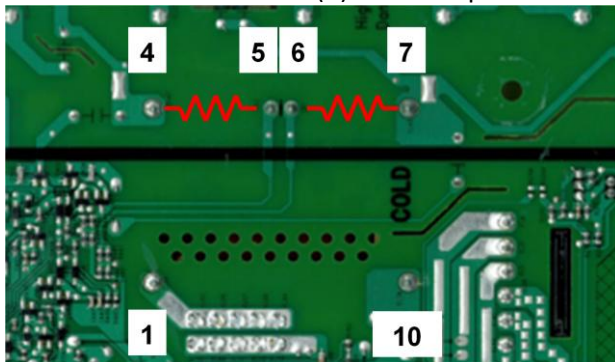


Fig.2 Pins Location

b. Measure the resistance (R) between pin 6 and 7 of T701 (Fig.2). If measured R is > 1 kohm = Not OK.

2. Replace transformer T701. Refer to Fig. 3 for the replacement flow.

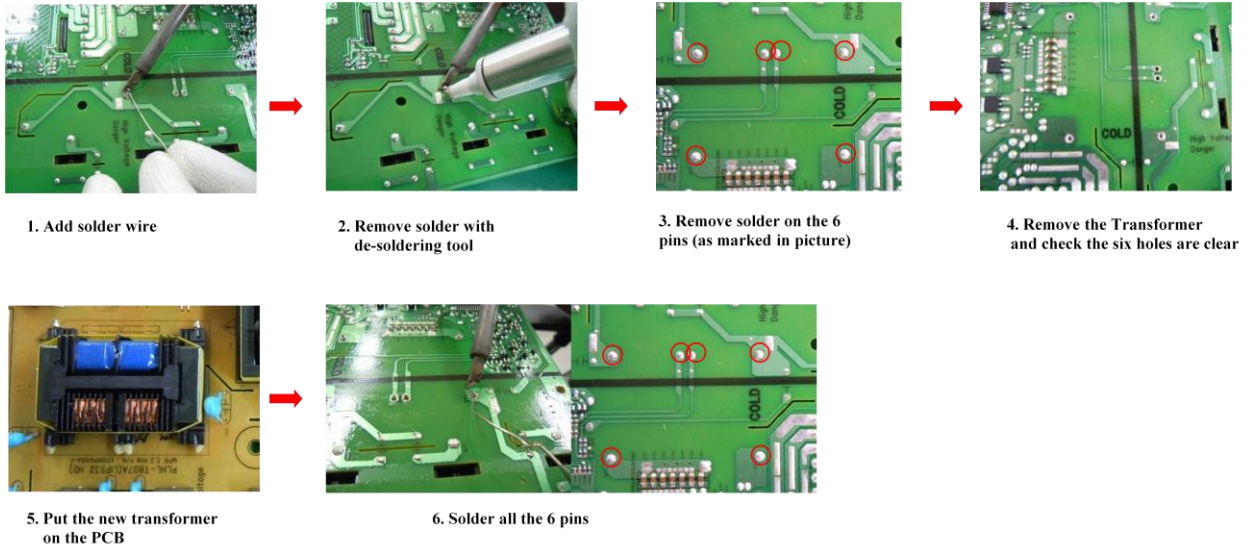


Fig.3 Transformer T701 replacement flow.

3. Perform the following check after replacing the components.

- a. Visual inspection.

Check if the transformer is fully inserted and properly soldered (Fig.4)

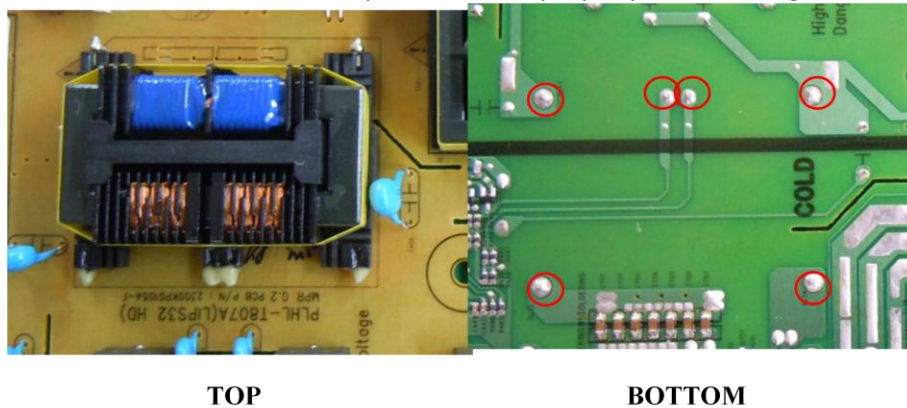


Fig. 4 After transformer T701 replacement.

- b. Perform the following measurement:

Measure the resistance (R) between pin 4 and 5 of T701 (Fig.2). If measured R is < 1 kohm = OK.

Measure the resistance (R) between pin 6 and 7 of T701 (Fig.2). If measured R is < 1 kohm = OK.

BURN IN TEST AFTER REPAIR:

Please power "on" the TV, switch to any valid channel, and playback for 2 hrs (at room temperature and closed cabinet) before returning the TV to the customer.