

3 Disassembly and Reassembly

This section of the service manual describes the disassembly and reassembly procedures for the MJ17CS TFT-LCD monitors.

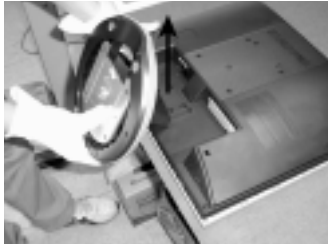
WARNING: This monitor contains electrostatically sensitive devices. Use caution when handling these components.

3-1 Disassembly

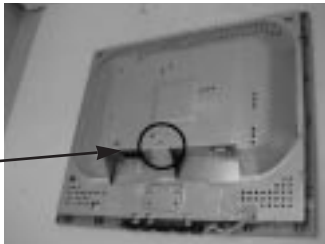
Cautions: 1. Disconnect the monitor from the power source before disassembly.



1. After placing monitor on the cushioned table, remove 6 screws on the left and right of the bottom.



2. Lift up the stand and lift up the rear cover.



3. Remove 2 screws from the shield.

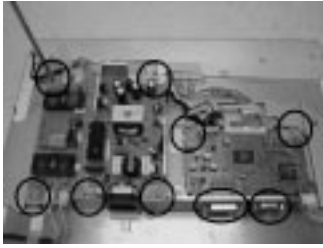


4. Disconnect function cable from the cover front and lift up the panel. Remove 4 screws from the panel shield. (Right / Left)



5. Lift up the panel shield and carefully remove the silicon glue on the cables with a nipper.
⚠Caution : Lamp wire may be easily damaged.

3 Disassembly and Reassembly



6. Remove 7 screws, 4 hexa screws from the boards and lift up the boards.

⚠ Caution : When repairing panel only, disconnect just LVDS cable, Panel-Lamp / Wire marked in circle in the picture without removing the screws on board in order to lift the board up.



7. This picture is panel.

3-2 Reassembly

Reassembly procedures are in the reverse order of disassembly procedures.