

2011 Samsung TV F/W Upgrade Guide



Samsung Electronics

Step1. How to prepare the USB Memory Drive

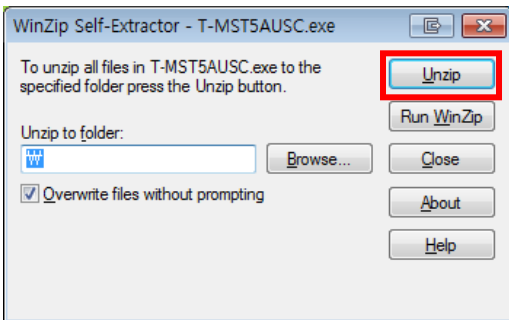
1. Download the firmware file from Samsung.com to your computer.

2. Connect the USB Memory Drive to the USB port of your PC.

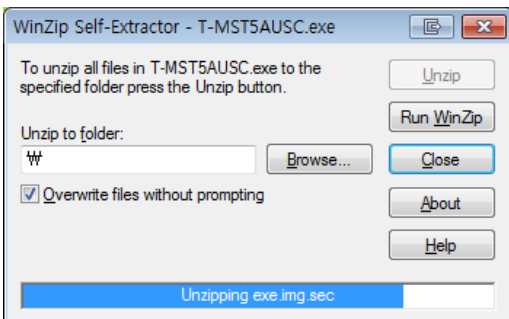
Copy the file onto the USB Memory Drive.

3. Go to the USB Memory Drive, and then double click the file.

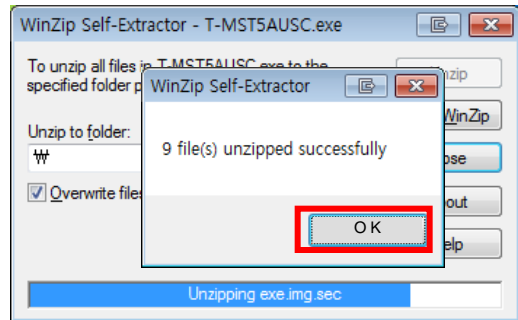
4. Click the “Unzip” button.



5. The file unzips.



6. After the file unzips completely, click the “OK” and “Close” buttons.



7. Confirm that a folder containing the firmware files has been added to the USB memory drive.

Folder name : T-GA?????? Or T-MS??????

8. Safely disconnect the USB memory drive by right clicking the green check mark on the taskbar, and then left clicking “Safely Remove”.

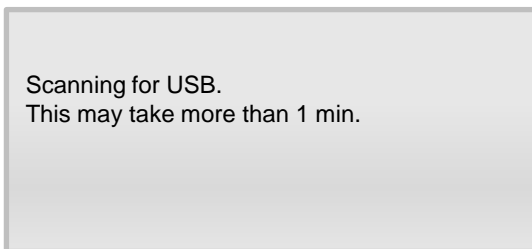
Step2. How to upgrade the Firmware

1. Turn on the TV.

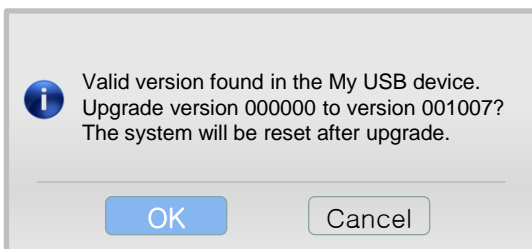
2. Insert the USB Memory Drive containing the firmware into the USB port of TV.

3. Press the MENU button, select 'Support', 'Software Upgrade', and then 'By USB'.

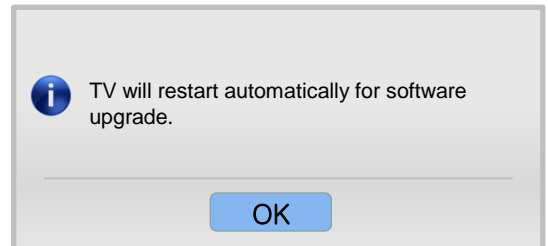
4. The message "Scanning for USB. This may take more 1 min." is displayed.



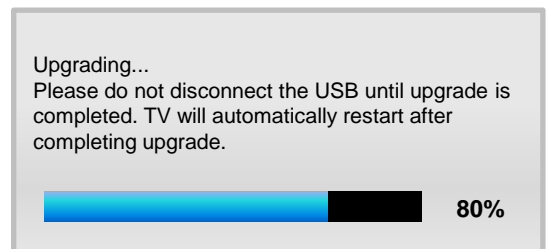
5. If the TV finds a valid firmware version, it displays the message below.



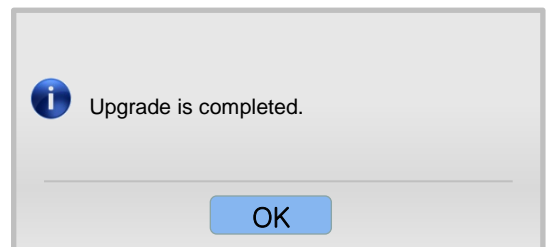
6. Press OK. The TV turns off automatically after displaying the message below.



7. After the TV turns on again, the upgrade starts.



8. When the firmware upgrade is complete, the TV turns off and then back on by itself.



❖ Cautions

While upgrading,

- ✓ Do not pull the USB Memory drive out.
- ✓ Do not unplug the power cable.
- ✓ Do not turn off the TV.



※ Warning

Pulling the USB Memory drive out or unplugging the power cable will cause a firmware error or main board failure. Firmware errors and main board failures are not covered by Samsung warranty policy.