

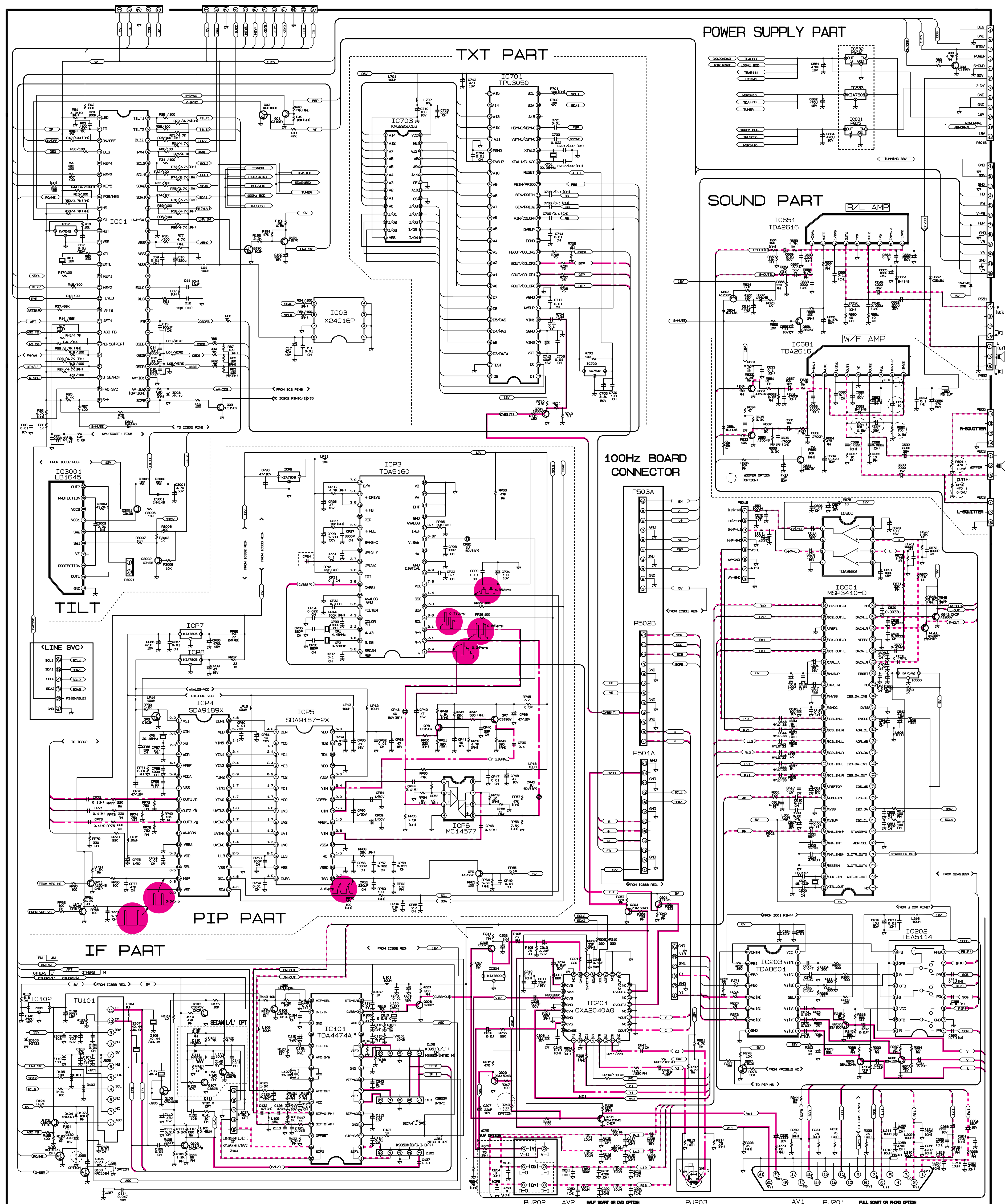
Service Sheet of MC-993A

CIRCUIT DIAGRAM FOR MC-993A CHASSIS MAIN1

99 03 11 Y S Park

P/N : 3854VA0061A-S1(1/2)

Date : 1999.7.23



Video
Y
C
Audio
Waveform

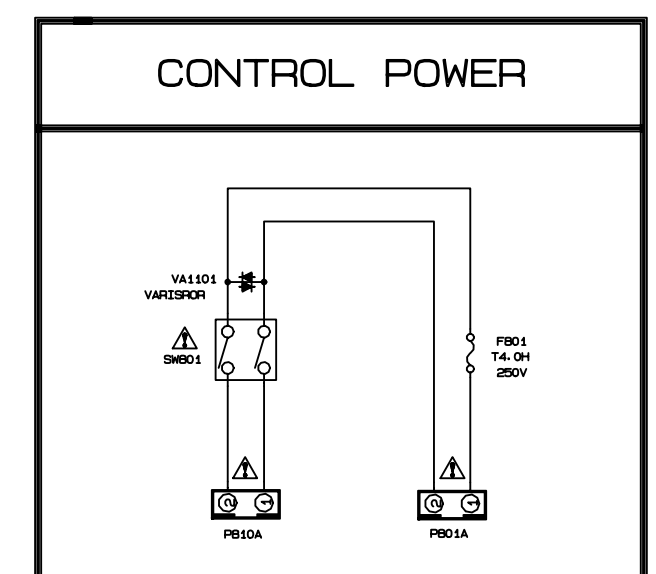
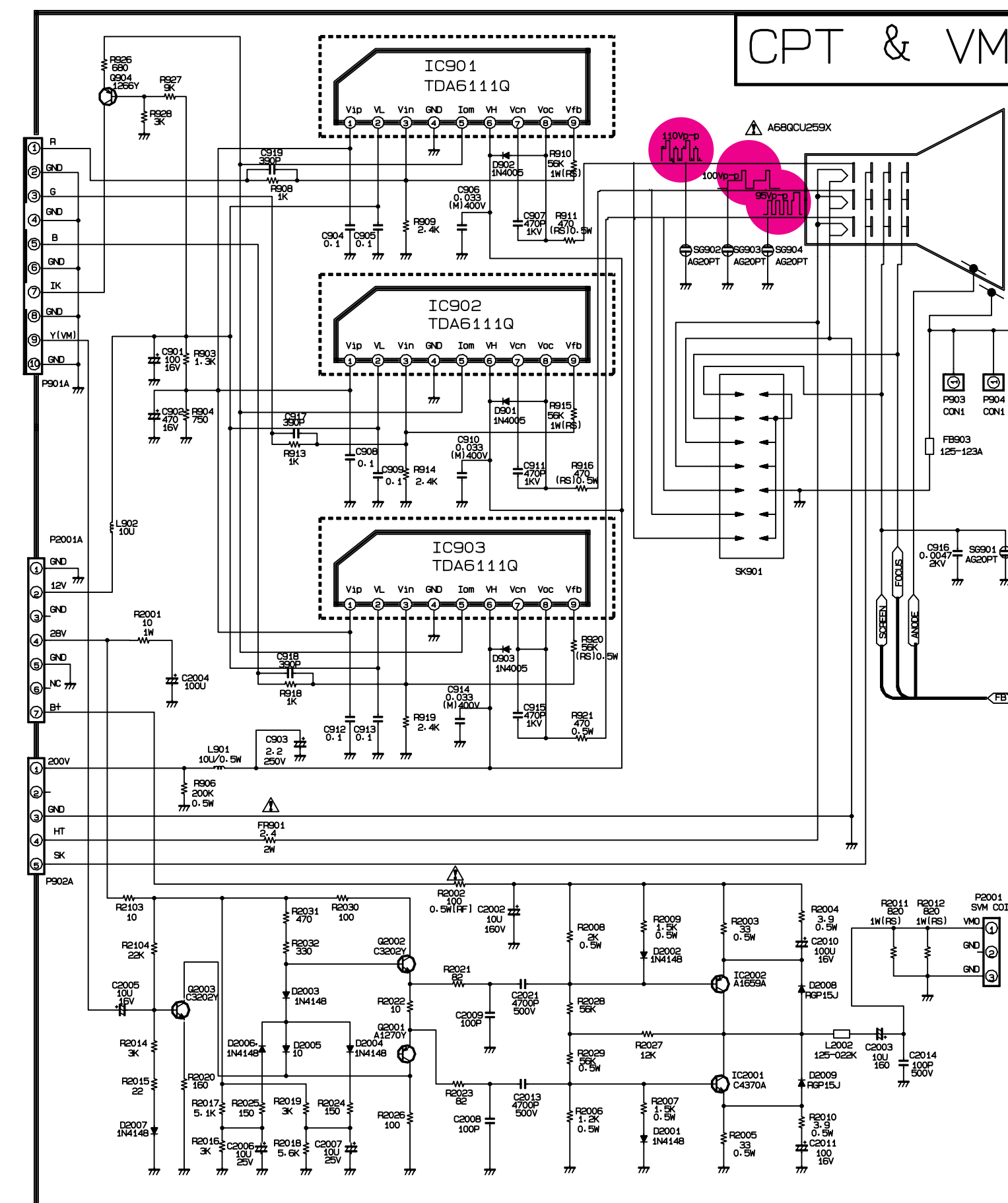
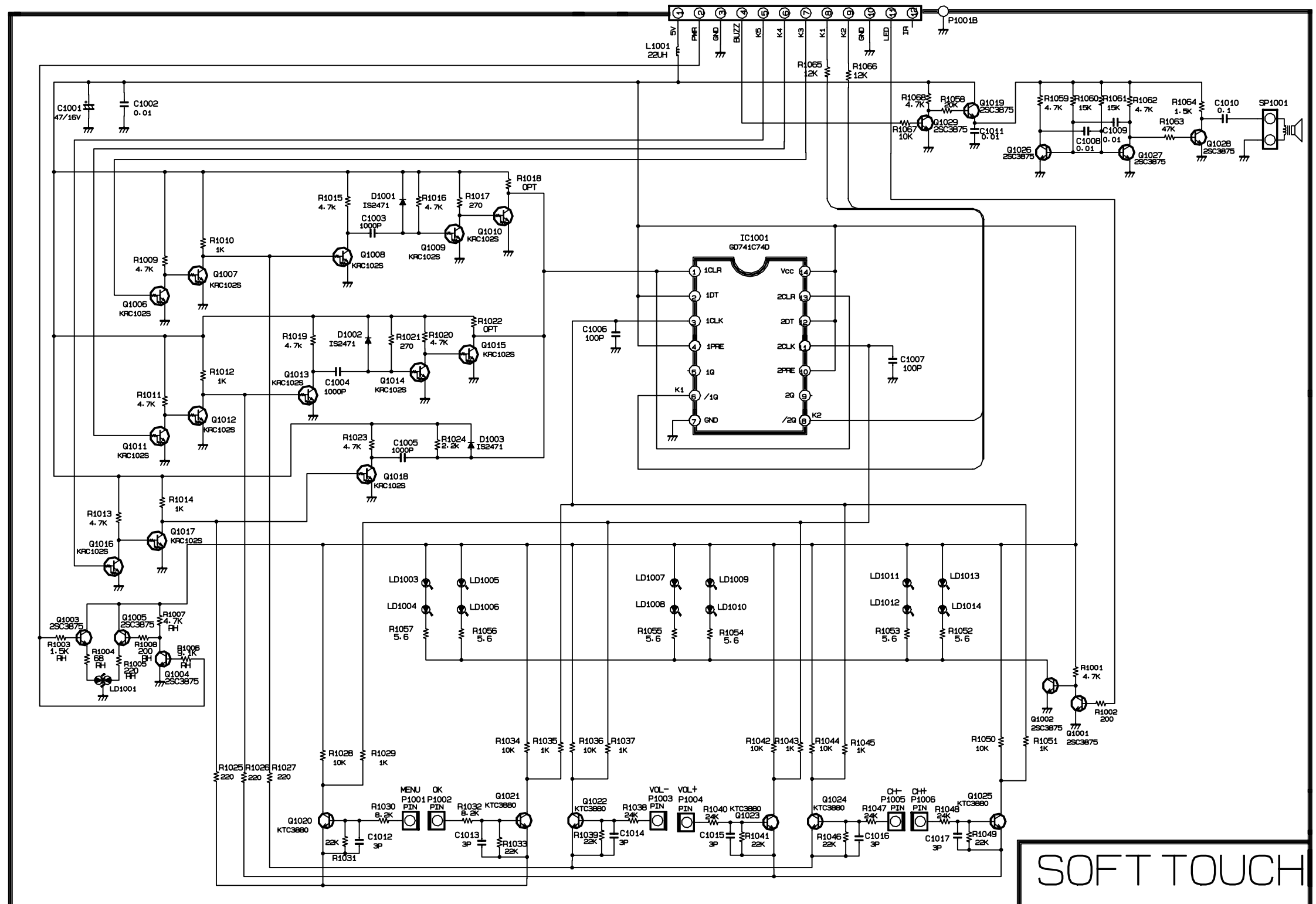
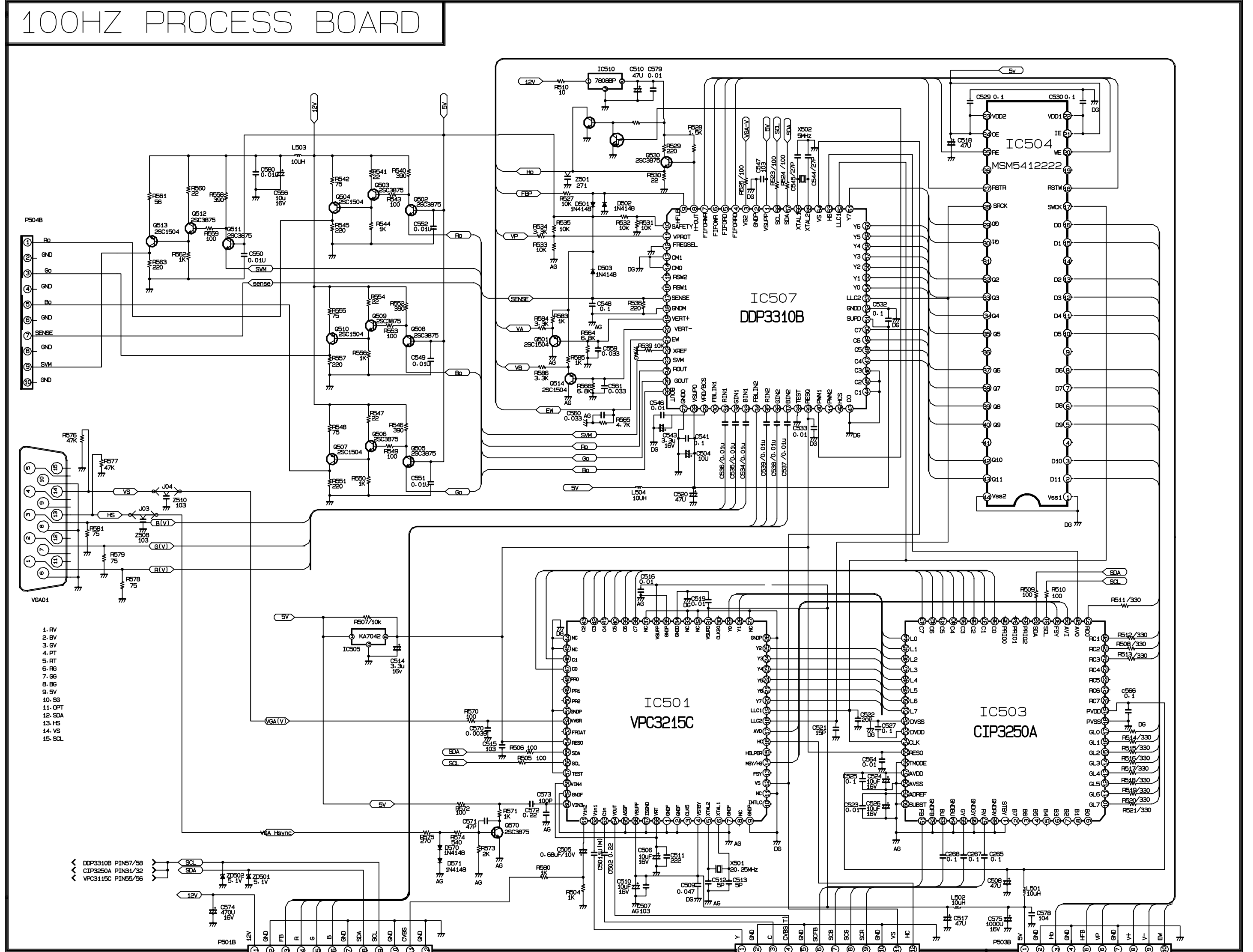
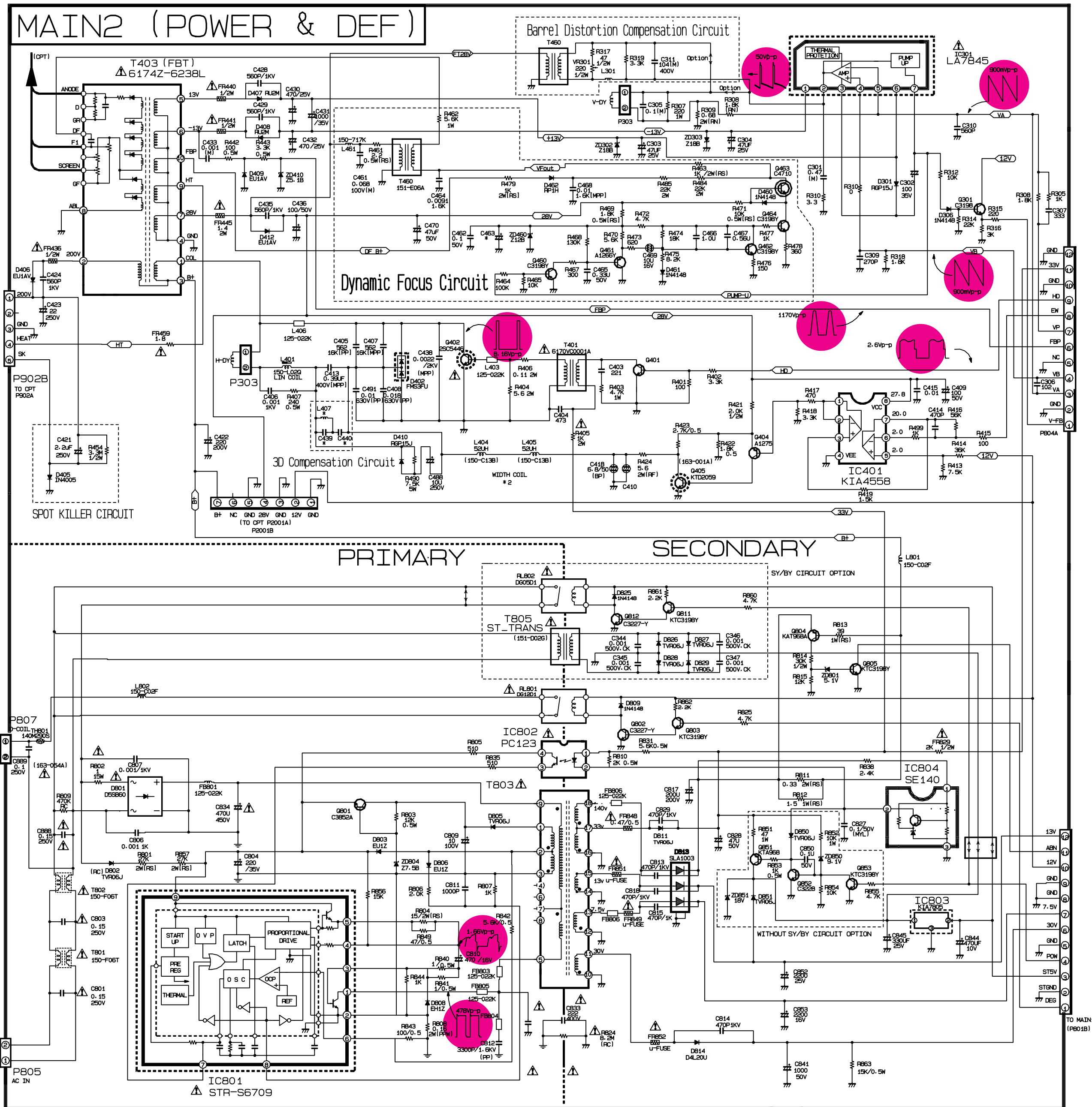
Service Sheet of MC-993A

P/N : 3854VA0061A-S2(1/2)

Date : 1999.7.23


CIRCUIT DIAGRAM FOR MC993A CHASSIS MAIN2 & SUB ASSY

98 11 03 Y S PARK



NOTICE

Since this a basic circuit diagram.
The value of components and some partial connection
are subject to change for improvement.

The components marked conform to VDE or IEC guide-lines and are essential for safe operation of the set, while those marked  are required for correct operation. Use specified parts only when replacing.

Value of resistor, capacitor and inductor

1. Resistances are shown in ohm. $K=1,000$. $M=1,000,000$.
2. Unless otherwise noted in schematic, all capacitor values less than 1 are expressed in μF and the values one than 1 in pF. The sign of (M) in schematic means MYLAR CAPACITOR.
3. Unless otherwise noted in schematic, all inductor values less than 1 are expressed in μH .

Observation of voltage and waveforms

1. Voltages with VTVM from point shown to chassis ground. Line voltage is 200 - 260 volts
Signal pattern is color-bar.
2. The schematic shown is representative only.
3. All waveforms are taken using a wide band oscilloscope and a low capacity probe.
4. Check Fine tuning, AGC, Brightness, Contrast and Colour for best picture. make sure that Colour, Brightness are in mid position and Contrast is in 75%.