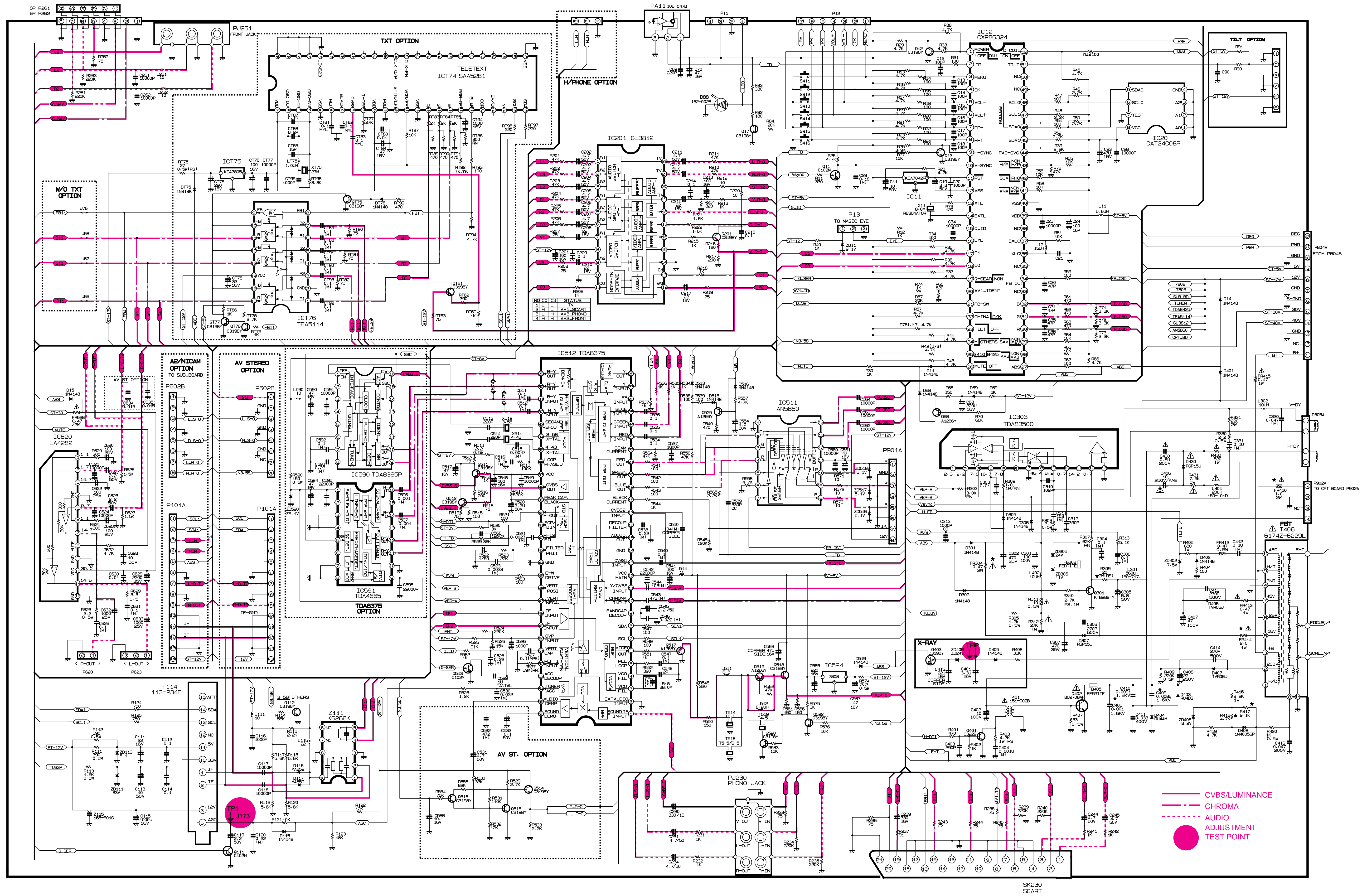


# Service Sheet of MC-74A (1/2)

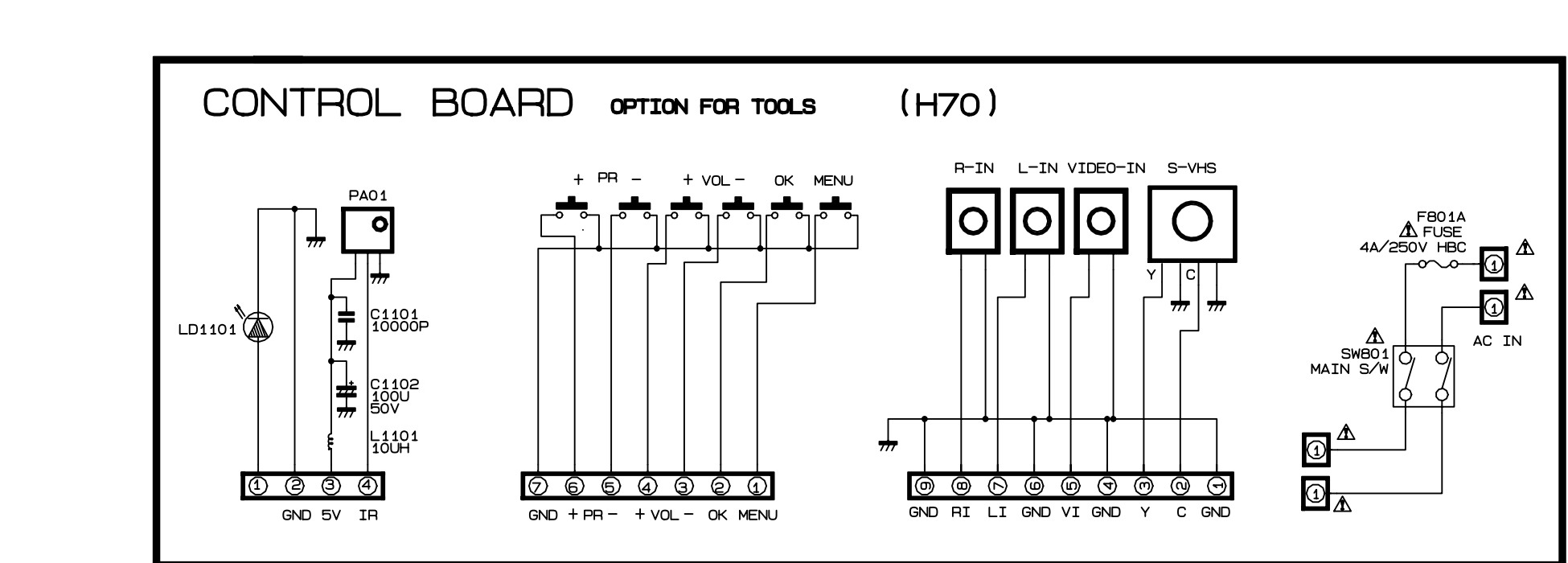
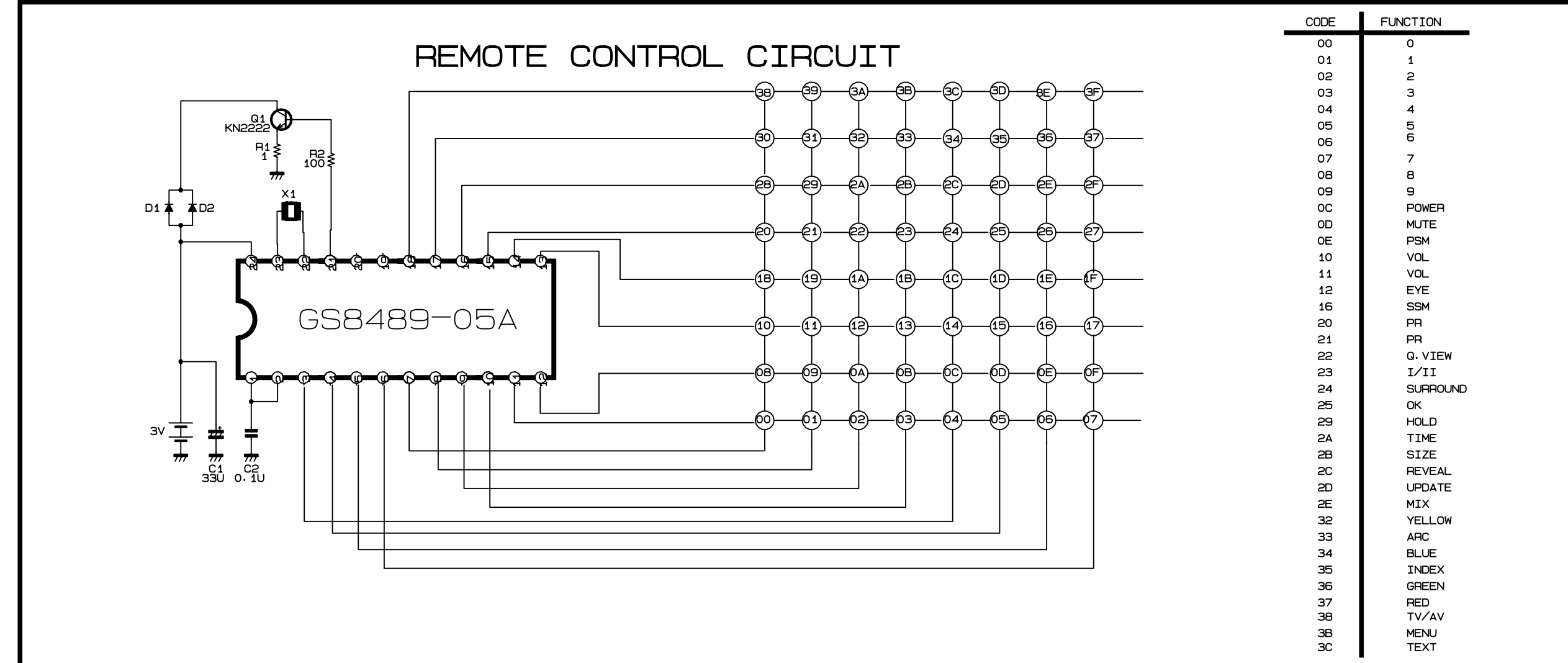
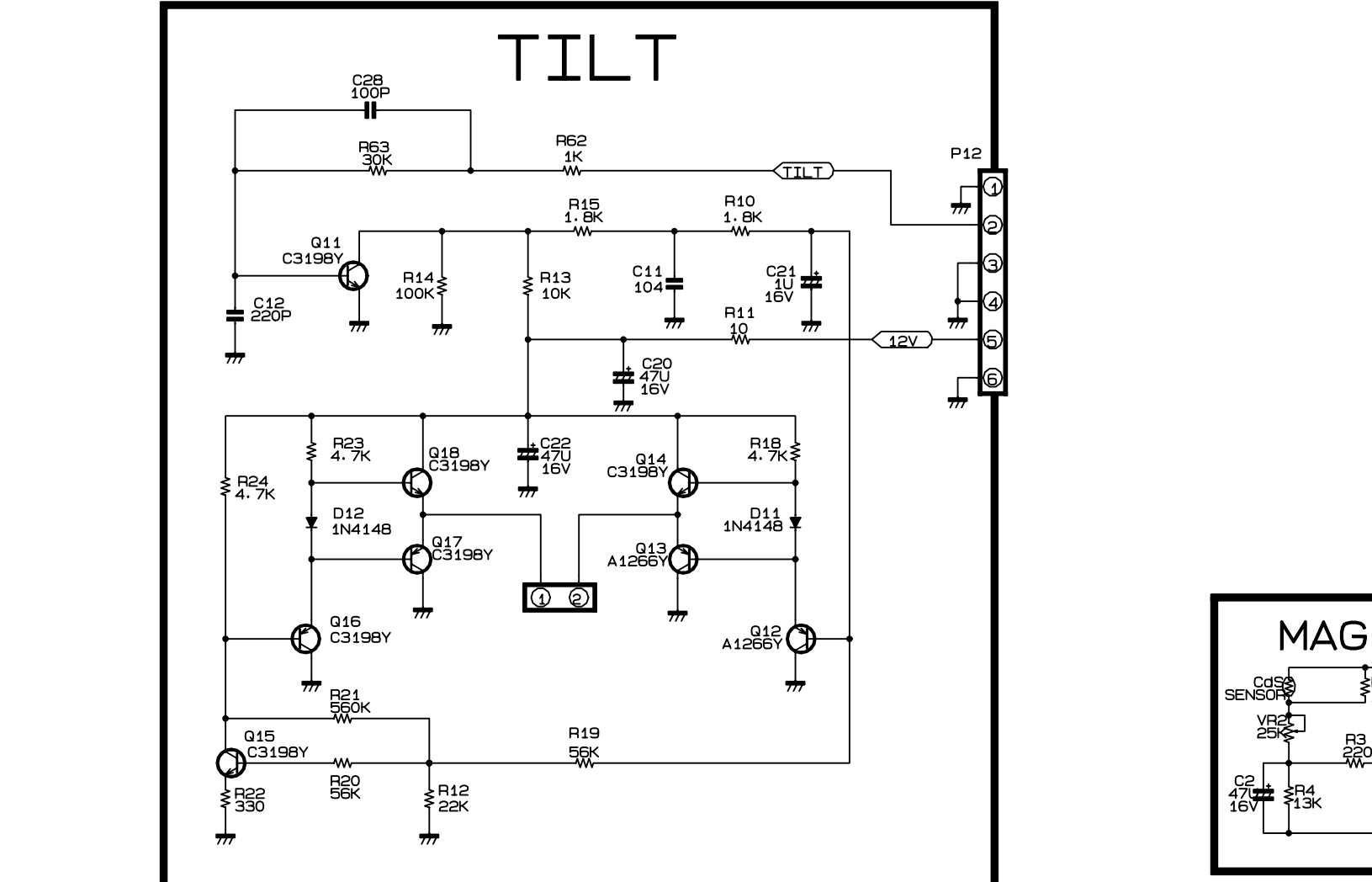
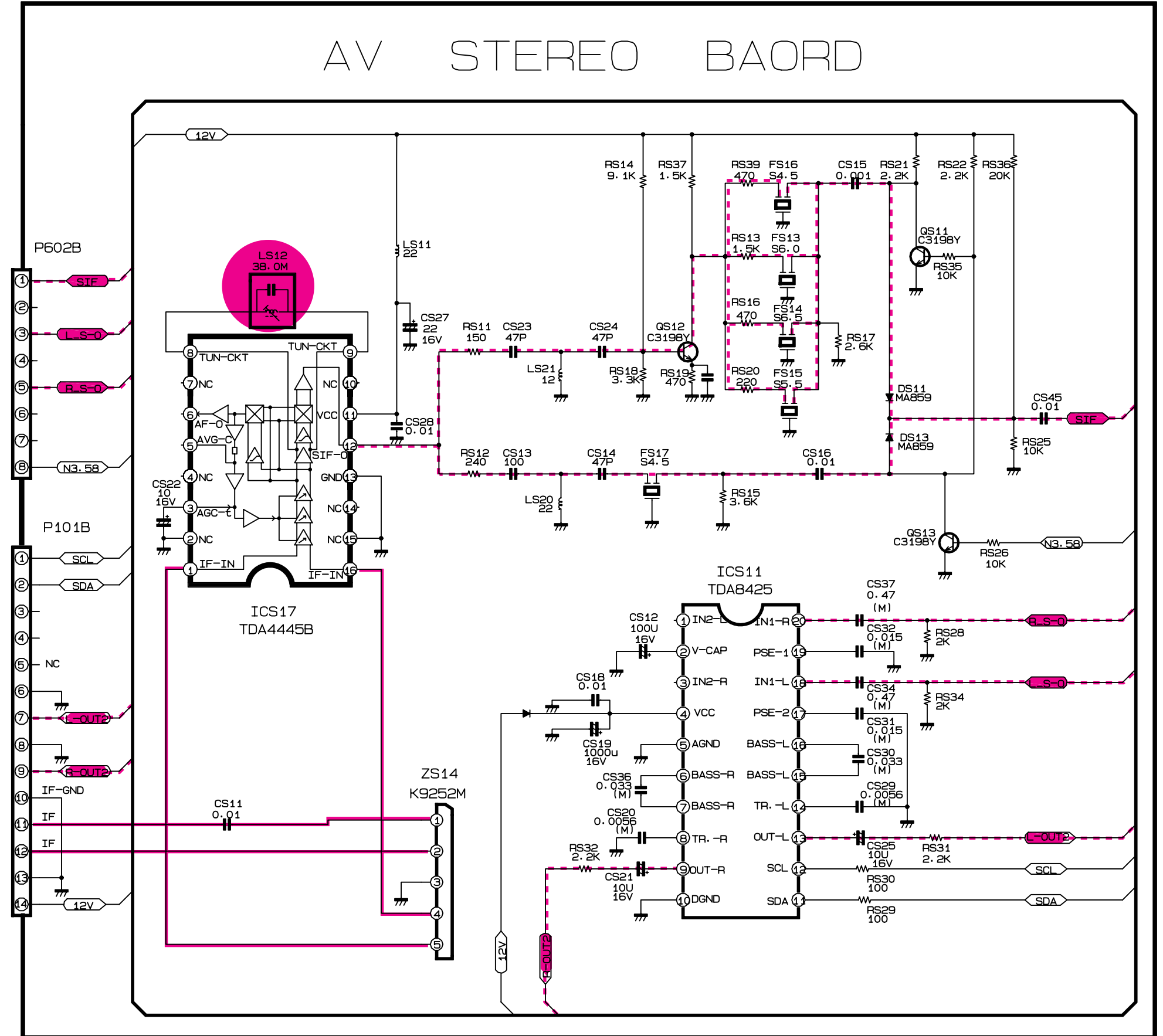
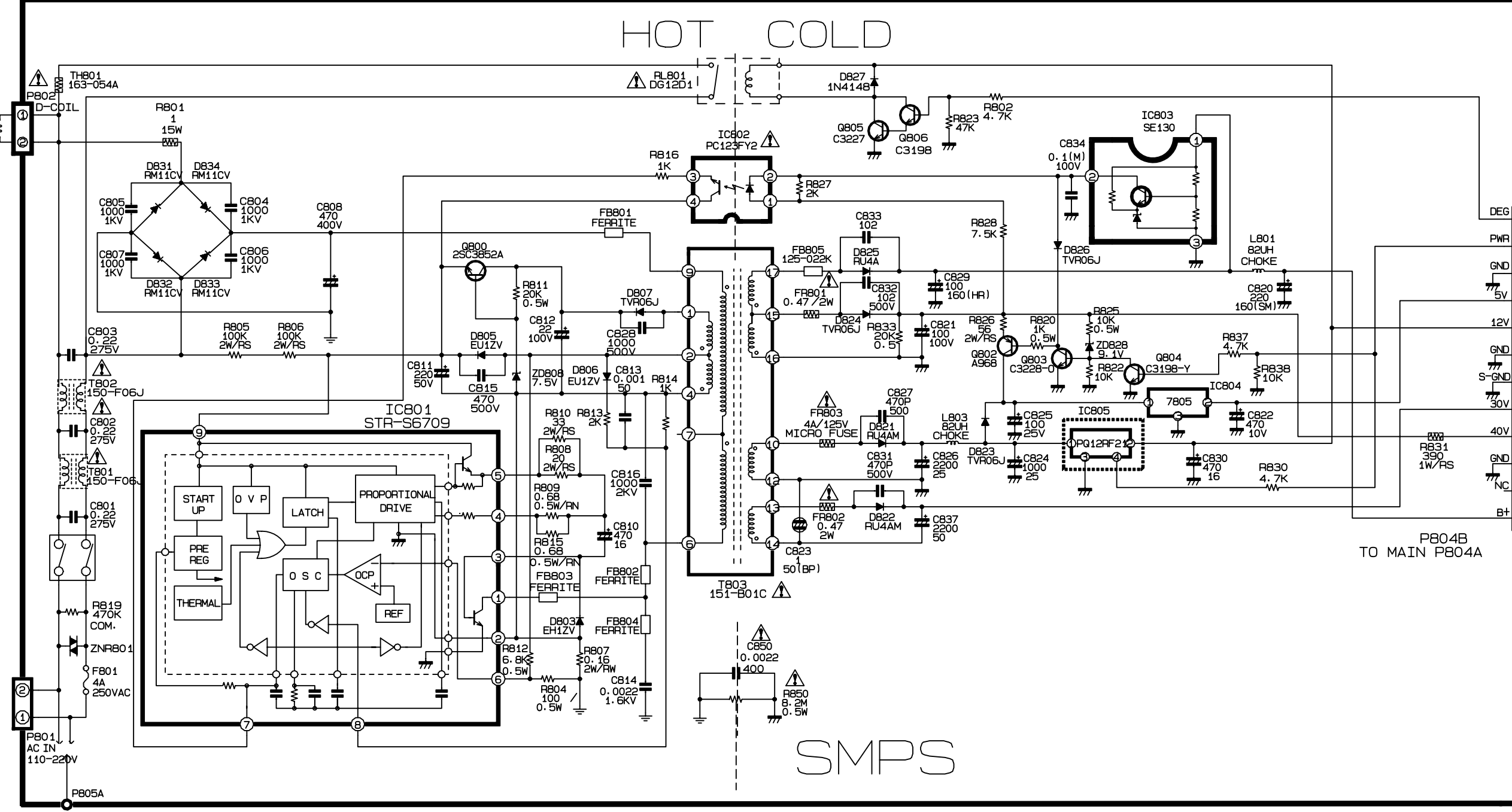
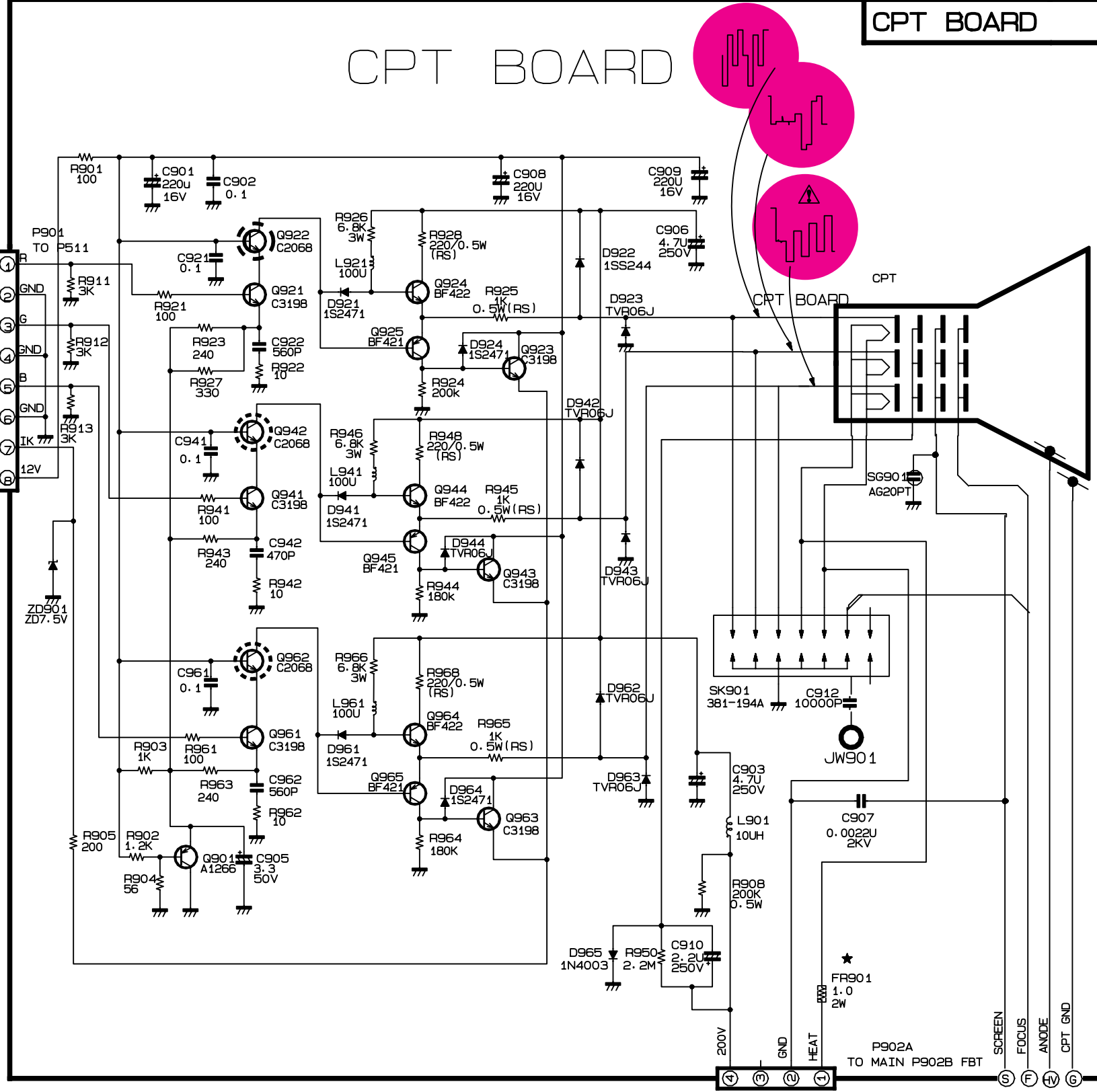
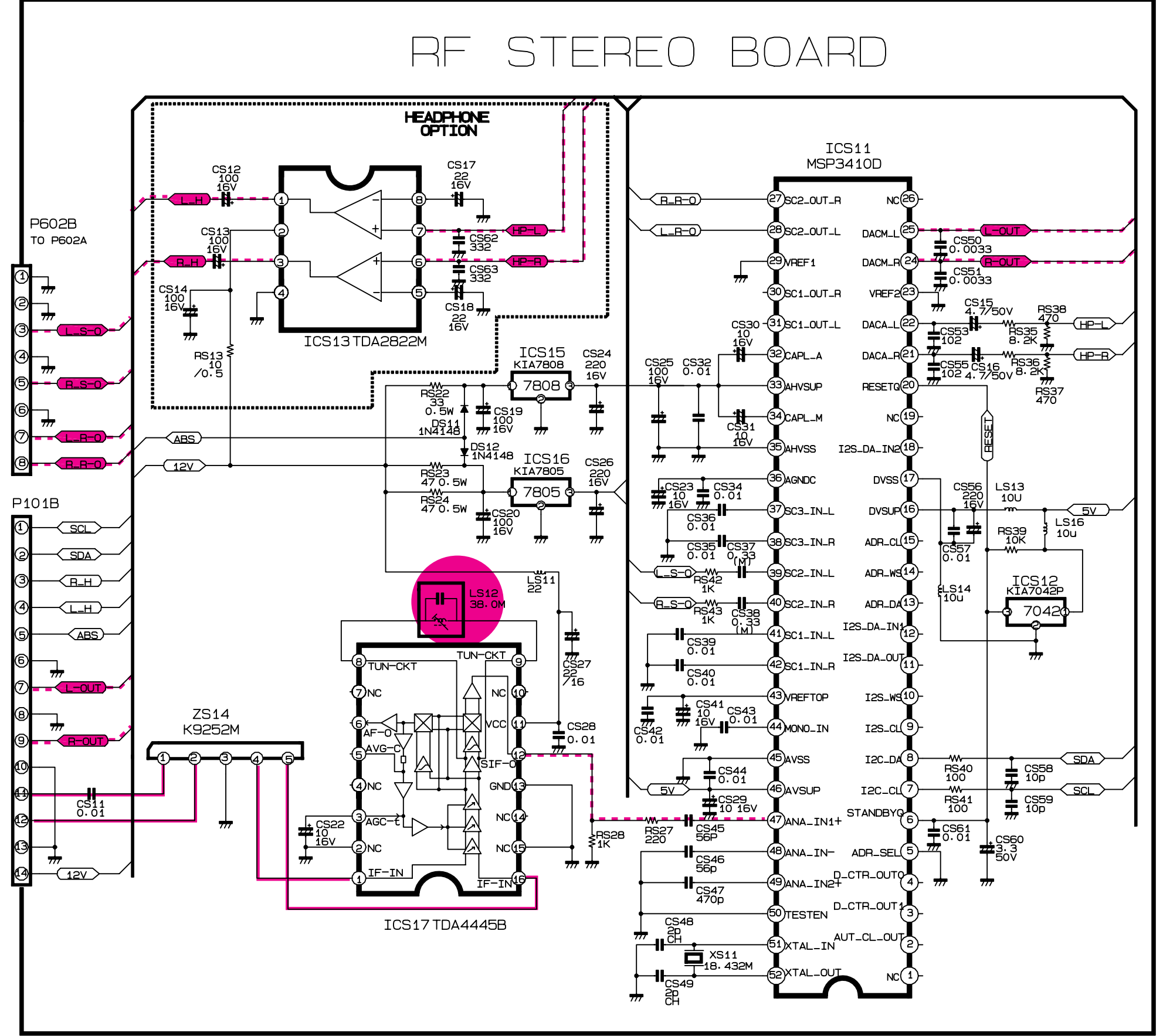
PART NO : 3854VA0018A-S1  
DATE : Nov 24, '97





Service Sheet of MC-74A ( 2/2)

PART NO : 3854VA0018A-S2  
DATE : Nov 24 ,97



**NOTICE**

Since this is basic circuit diagram. The value of components and some partial connection are subject to change for improvement without notice.

The components marked  $\Delta$  conform to VDE or IEC guide-lines and are essential for safe operation of the TV receiver. While those marked  $\Delta$  are required for correct operation. Use specified parts only when replacing.

**Observation of voltages and waveforms**

1. Voltages read with VTVM from point to chassis ground. line voltage is 230 $\pm$ 20% volts. signal pattern is colour-bar.
2. The schematic shown is representative only.
3. All waveforms are taken using a wide band oscilloscope and a low capacity probe.
4. Check FINE TUNING, AGC, CONTRAST, BRIGHTNESS and COLOUR controls for best picture. make sure that COLOUR and BRIGHTNESS are in mid-point and CONTRAST is in 75%.
5. Waveforms are taken using a standard colour signal.

Value of resistor, capacitor and inductor

1. Resistances are shown in ohm. K=1,000. M=1,000,000.

2. Unless otherwise noted in schematic. All capacitor values less than 1 are expressed in mfd and the values more than 1 in pF.

3. Unless otherwise noted in schematic. all inductor values more than 1 are expressed in uH and the values less than 1 in Henry(H).

**★ INCH CONVERSION PARTS**

CIR. -NO	25INCH	28INCH	29INCH
01			
02			
03			
04			
05			
06			
07			
08			
09			
10			
11			
12			
13			
14			
15			
16			
17			
18			
19			
20			
21			
22			
23			
24			
25			
26			
27			
28			
29			
30			
31			
32			
33			
34			
35			
36			
37			
38			
39			