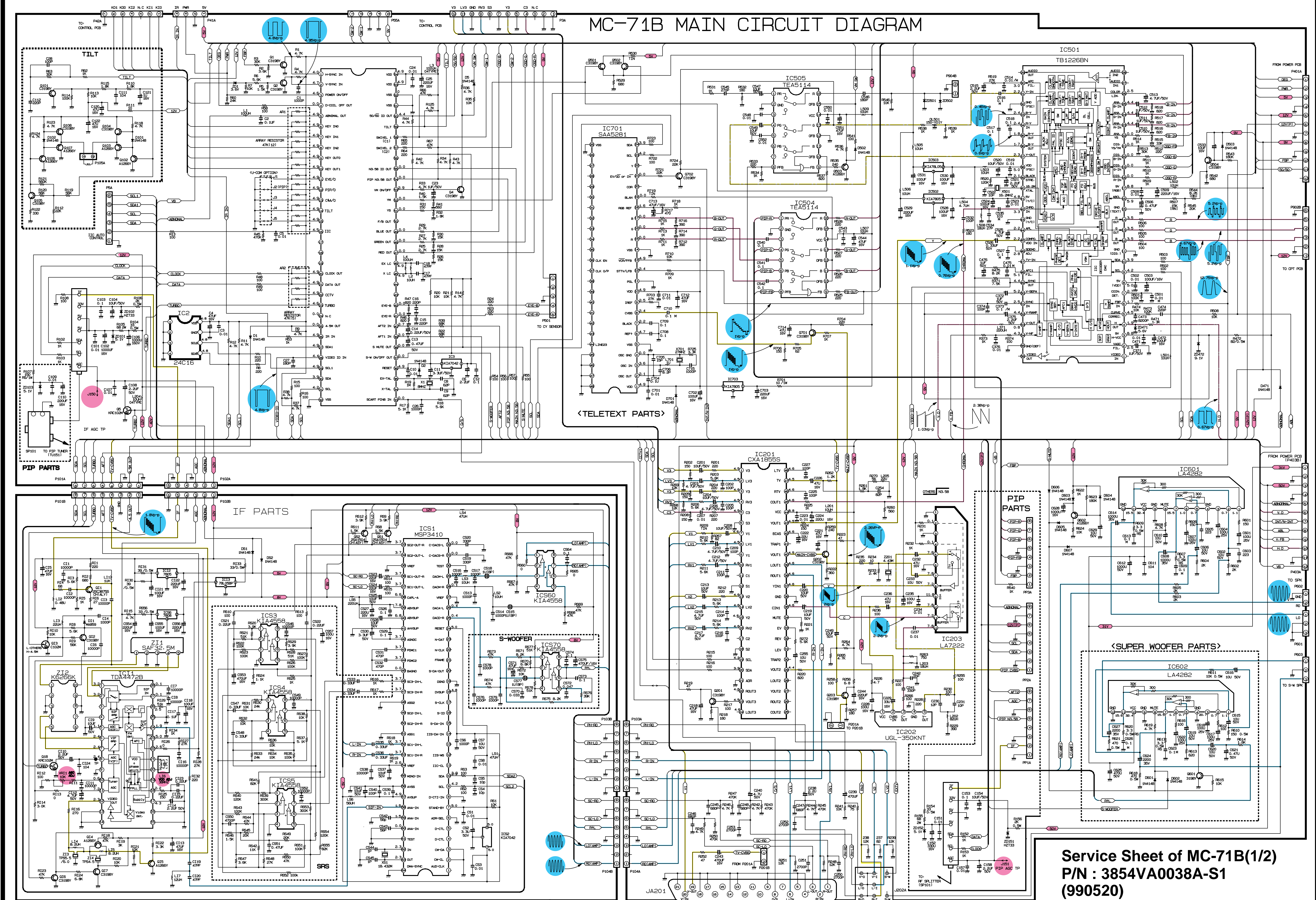


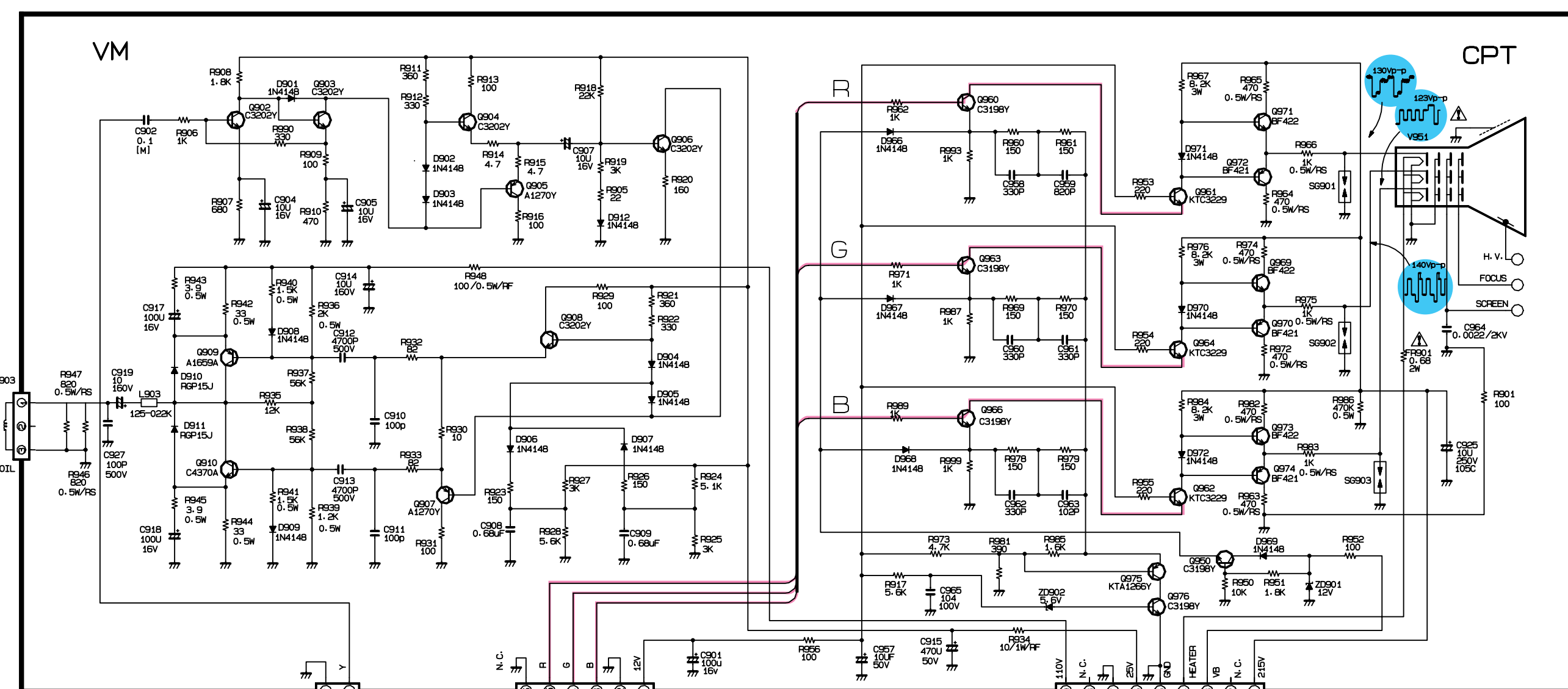
Service Sheet of MC-71B(1/2)

MC-71B MAIN CIRCUIT DIAGRAM

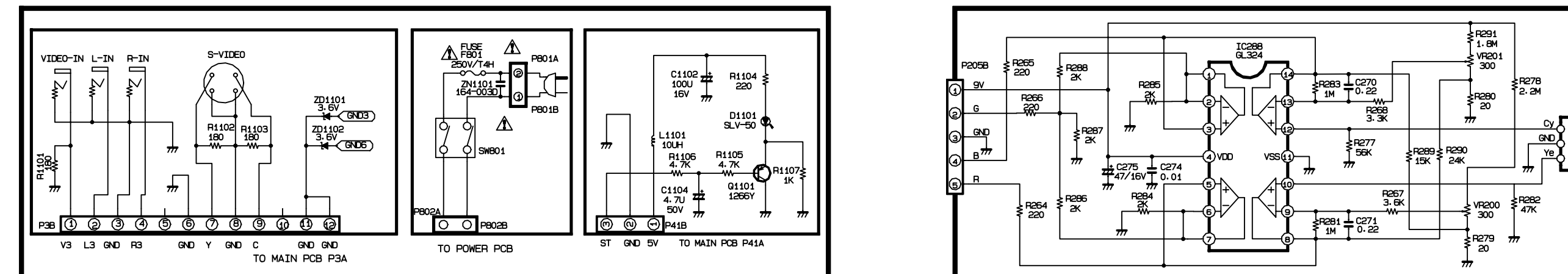


MC-71B SUB CIRCUIT DIAGRAM

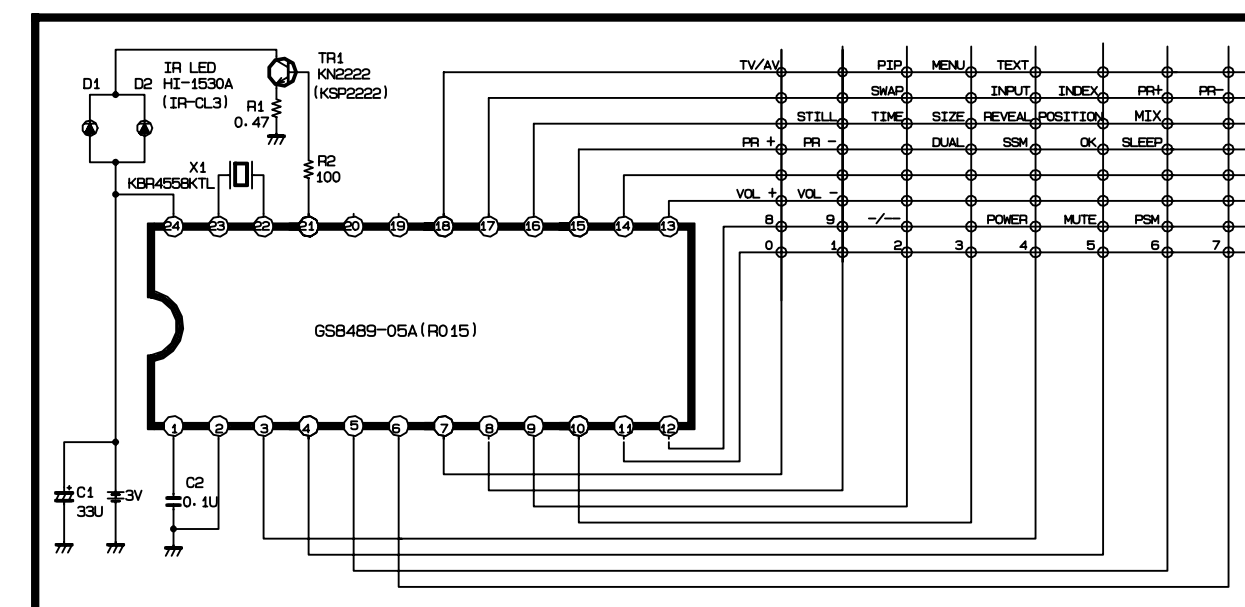
< 29 INCH CPT PCB ASSY >



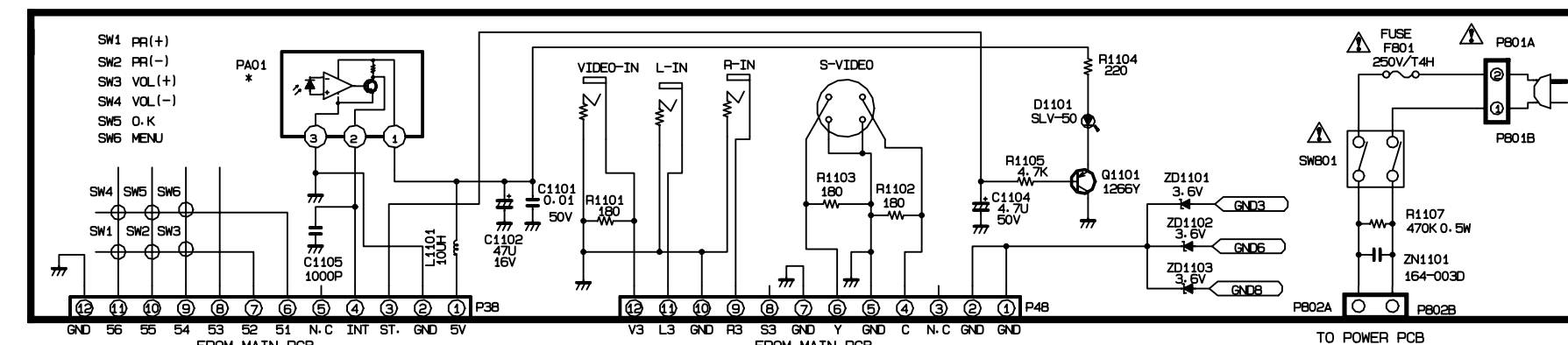
CY SENSOR



<REMOTE CONTROL>





<CONTROL PCB ASSY : FOR H20 SERIES MODEL>



NOTICE

Since this a basic circuit diagram, the value of components and some partial connections are subject to change for improvement.

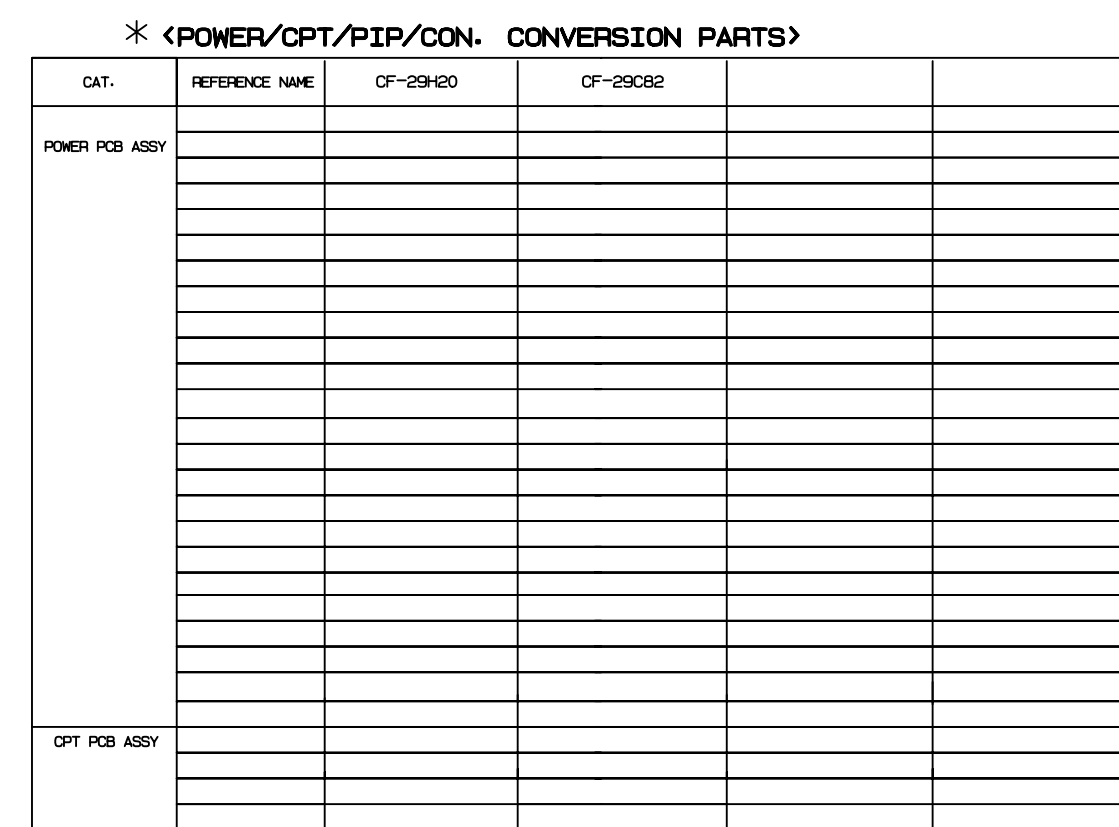
The components marked  conform to VDE or IEC guide-lines and are essential for safe operation of the set, while those marked  are required for correct operation. Use specified parts only when replacing.

Value of resister, capacitor and inductor

1. Resistances are shown in ohm- $K=1,000$, $M=1,000,000$.
2. Unless otherwise noted in schematic, all capacitor values less than 1 are expressed in uF and the values more than 1 in pF. The sign of (M) in schematic means MYLAR CAPACITOR.
3. Unless otherwise noted in schematic, all inductor values more than 1 are expressed in uH.

Observation of voltage and waveforms

1. Voltages with VTVM from point shown to chassis ground. Signal pattern is color-bar.
2. The schematic shown is representative only.
3. All waveforms are taken using a wide band oscilloscope and a low capacity probe.
4. Check Fine tuning, AGC, Brightness, Contrast and Colour for best picture, make sure that Colour, Brightness are in mid position and Contrast is in 100%.



Service Sheet of MC-71B(2/2)
P/N : 3854VA0038A-S2
(980411)